

**colortile**  
ceramics & innovation

**colortile**  
ceramics & innovation

**Color Granito Pvt. Ltd.**

At. Ratavirda Village,  
Sartanpar Road, Tal. Wankaner - 363 621,  
Dist. Morbi, Gujarat, INDIA

Cell: +91 75678 11311

[export@colortile.in](mailto:export@colortile.in) | [www.colortile.in](http://www.colortile.in)

[f](#) | [@](#) | [t](#) | [v](#)

# colortile

ceramics & innovation

EXCLUSIVE COLLECTION

**100 X**  
**300mm**

**OS20**  
ceramic style

The  
Workshop  
FACTORY Shop

"The Workshop Factory" intenta plasmar en cada una de sus piezas cerámicas una gran cantidad de diseños, tendencias, colores y gráficas. Todas ellas nacidas del propio diseño interno o del diseño adquirido externamente tanto de grandes diseñadores como de los pequeños artesanos prácticamente desconocidos. Intentando siempre que nuestra cerámica sea la principal protagonista de todos y cada uno de nuestros eventos, presentaciones y colecciones.

Llamar la atención con lo que mejor sabemos hacer; plasmar en cerámica todas las ideas y tendencias detectadas y desarrolladas. Y todo ello con la mejor presentación y puesta en escena que somos capaces de desarrollar para mostrar nuestros fabricados cerámicos. Nuestro diseño es nuestra cerámica, nuestro diseño es nuestra única marca, siempre poniendo a prueba nuestra capacidad para dibujar el futuro.

"The Workshop Factory" always tries to translate into its own ceramic pieces a great quantity of Original Designs, Trends, Colours and graphics. These are brought by our Design Lab, Great Designers or even Local Craftmen from all over the world. Our Tiles are definitely the main character in our events, presentations and collections.

Catching Your Eye is what we do best, with translating into ceramic all the Trends that have been previously detected and properly developed. And all this with the best presentation and staging we can offer. Our design is our Tile, our Design is our one and only Brand, always testing our ability to draw the future.

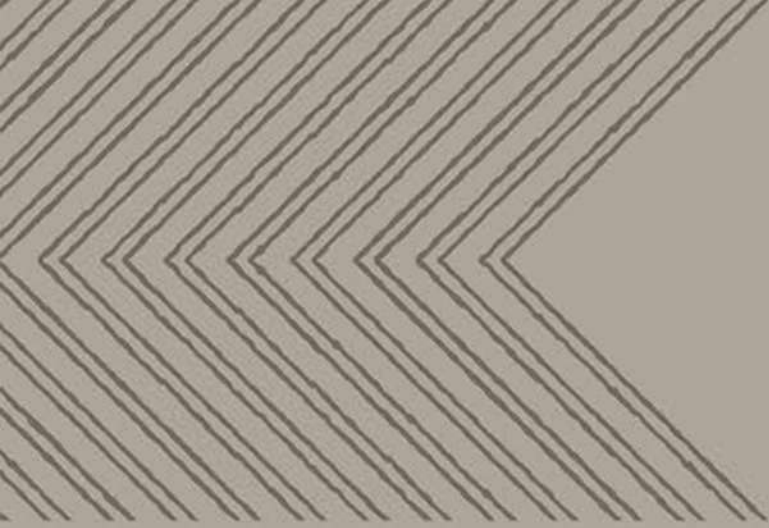
COLLECTION  
**Rome**

**100x300mm**

*Life is colorful*

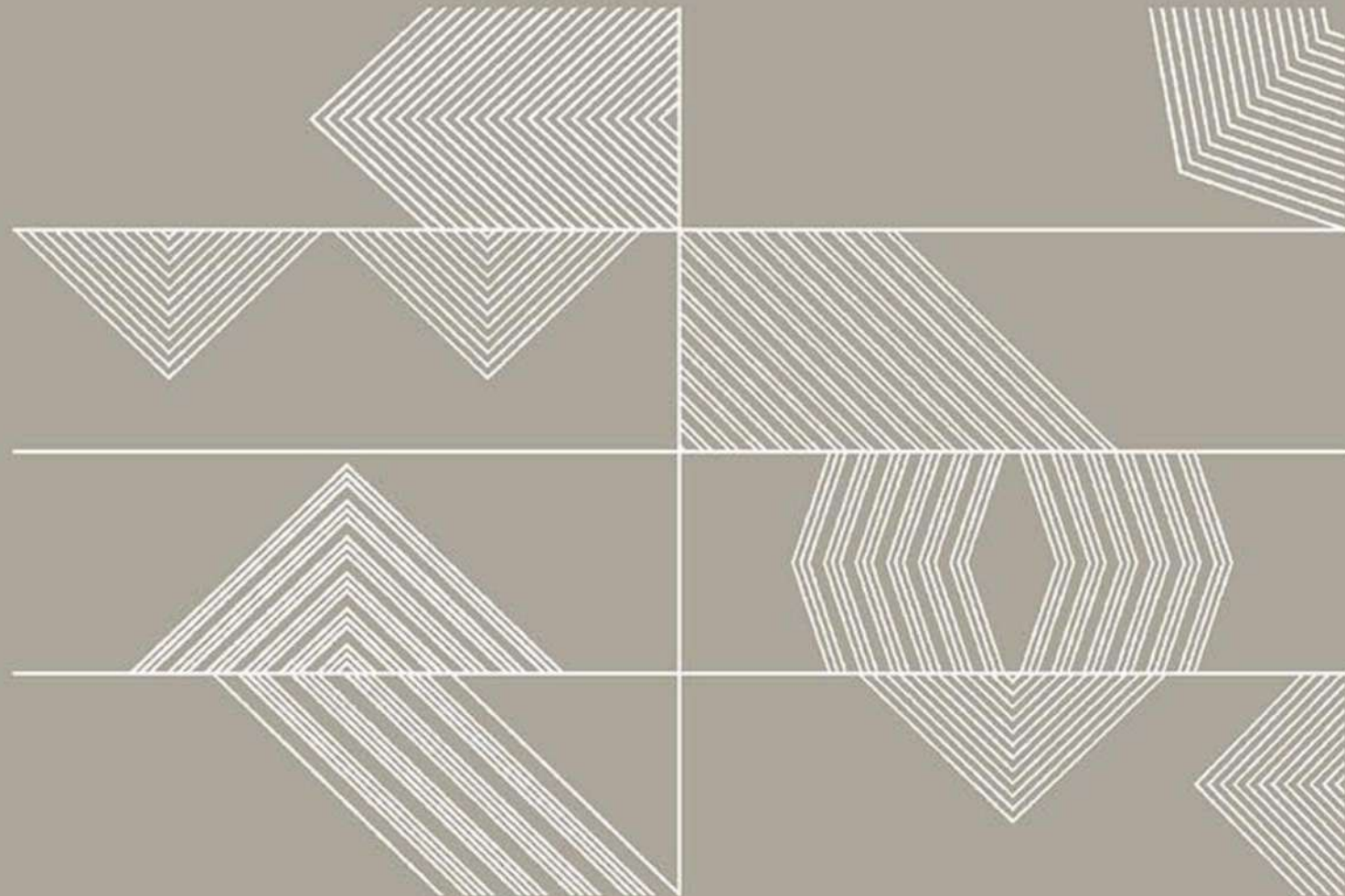
*We gradually find ourselves in a black and white world, where some things that we do are good and other things are bad. These are the first “colors” that we learn about in life. ... You will get to know the colors of love, joy, surprise, anger, sadness and fear.*



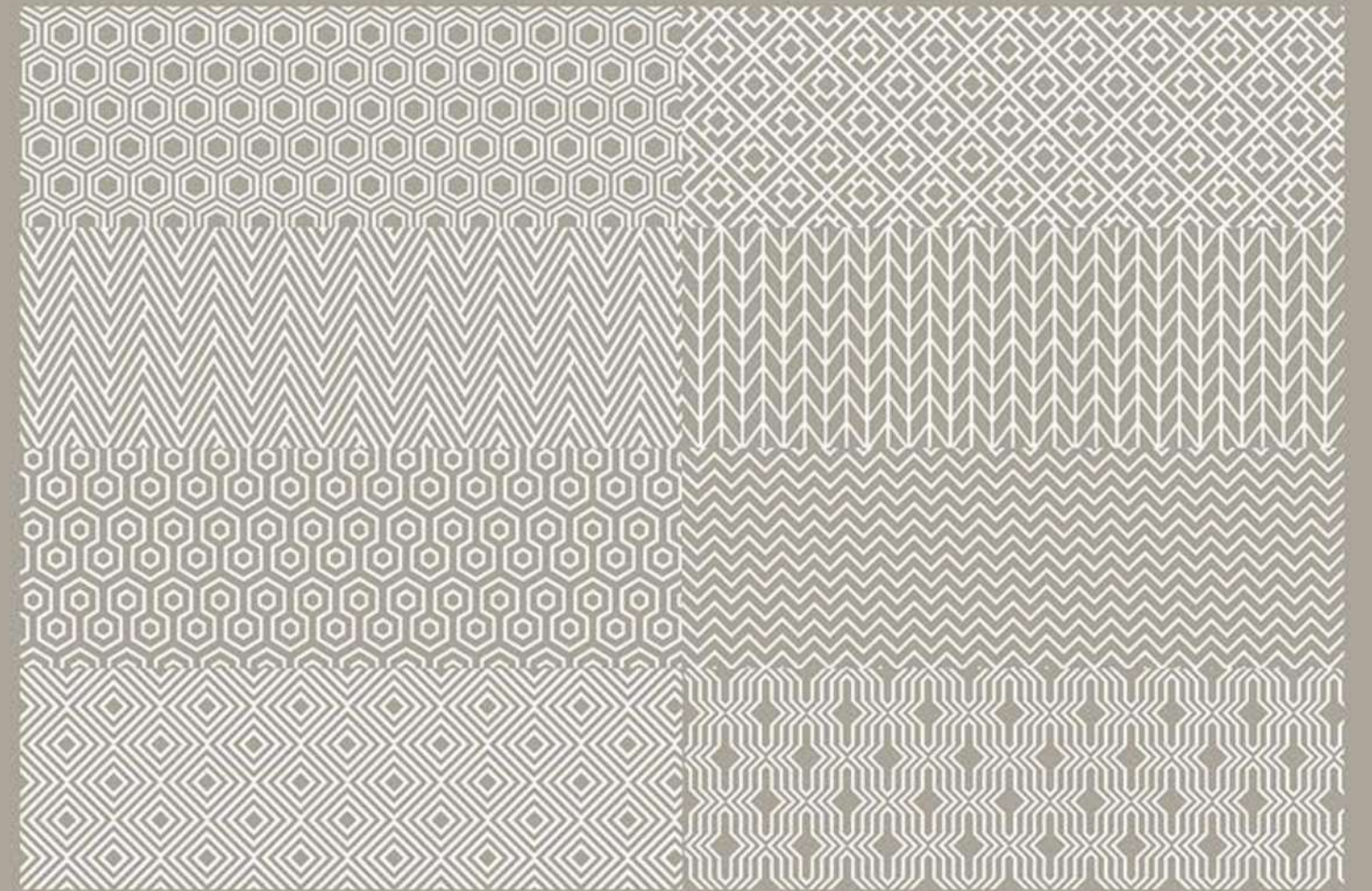


*We Give You 2 Decor Options In Rome Series,  
1 is GEO and 2nd Is ERA, You can Apply Any One Is with Any Base Color.*

Rome ERA



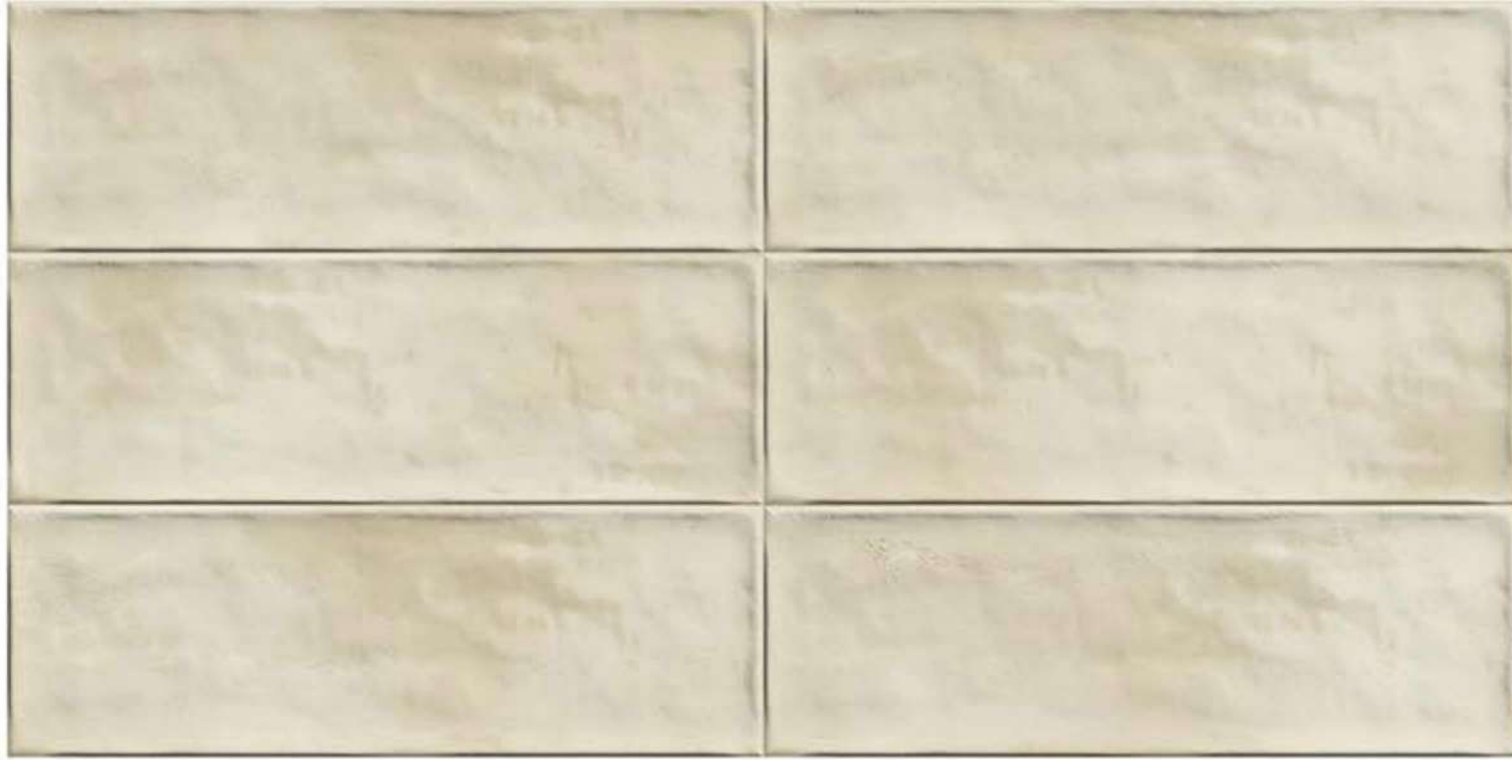
Rome GEO



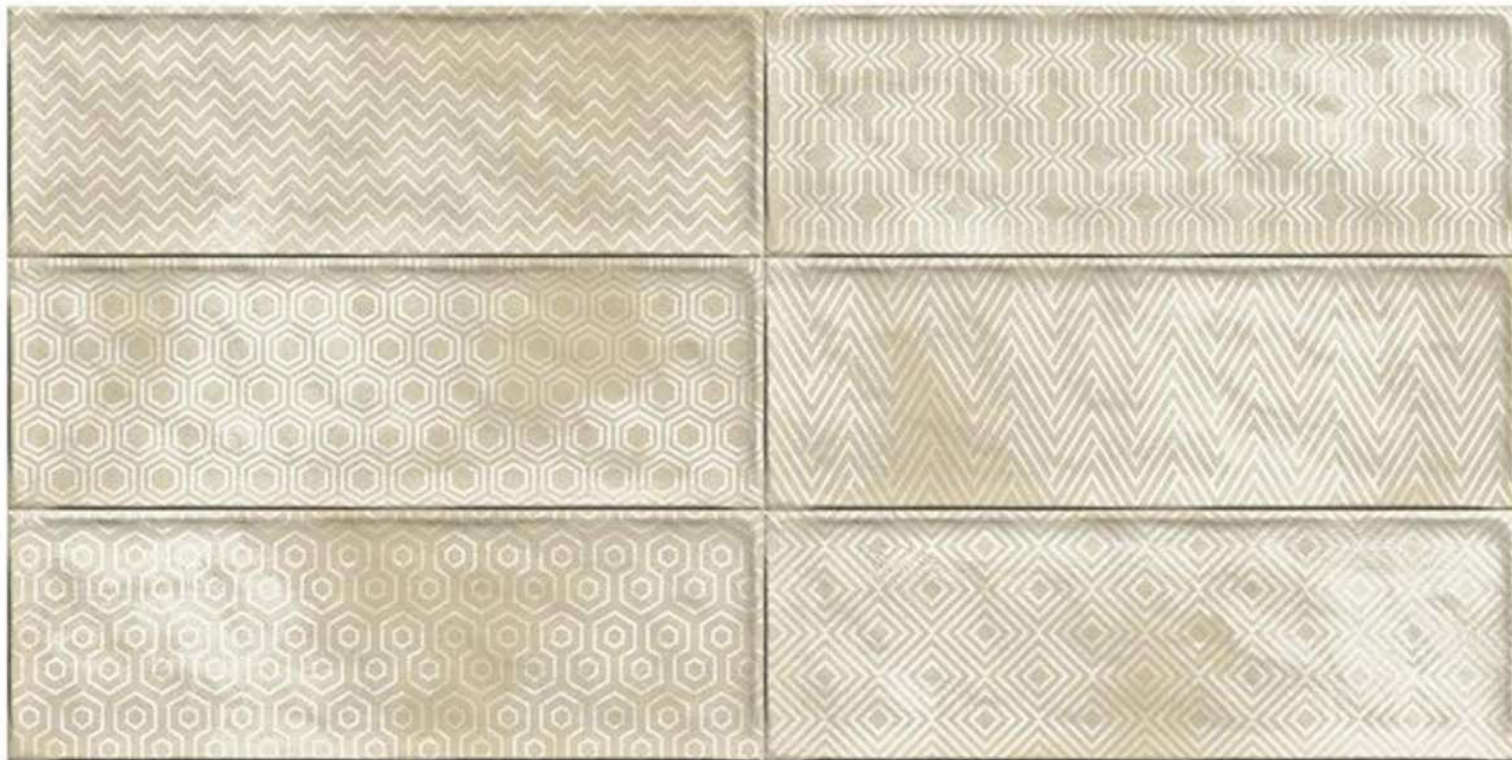
# ROME BEIGE

4" X 12"

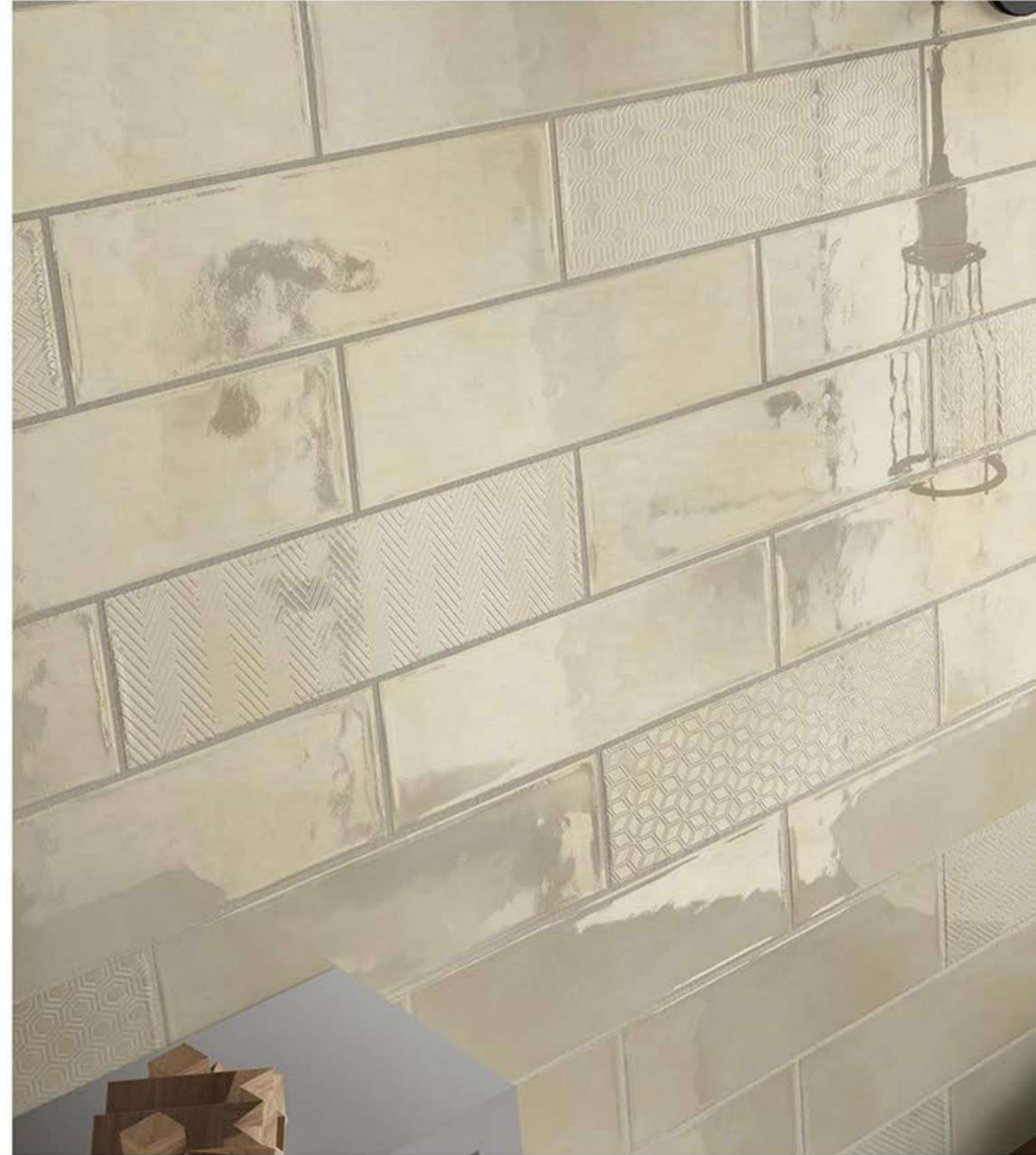
ROME BEIGE IS CHARACTERIZED BY AN ORGANIC AND NATURAL GEOMETRY THAT GIVES THE SPACE A TIMELESS CHARACTER WITH ALL LUXURY.

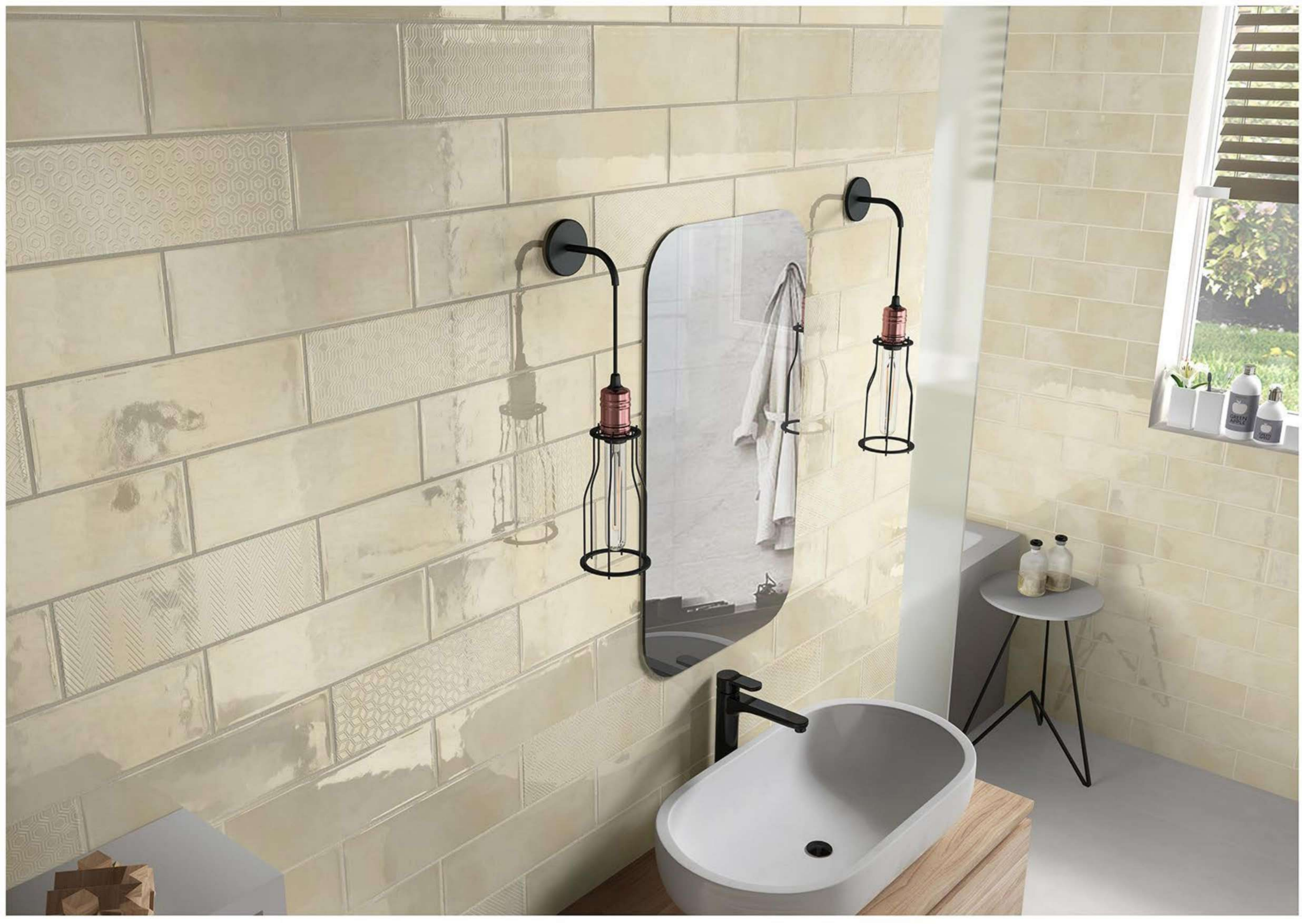


ROME BEIGE



ROME BEIGE GEO





# ROME BROWN

4" X 12"

Rome brown is a natural color that evokes a sense of strength and reliability. It's often seen as solid, much like the earth, and it's a color often associated with resilience, dependability, security, and safety. Brown can also create feelings of loneliness, sadness, and isolation.



ROME BROWN



ROME BROWN ERA







# ROME CHOCO

4" X 12"

Rome Choco is a tone of dark brown that resembles chocolate. At right is displayed the color traditionally called chocolate.

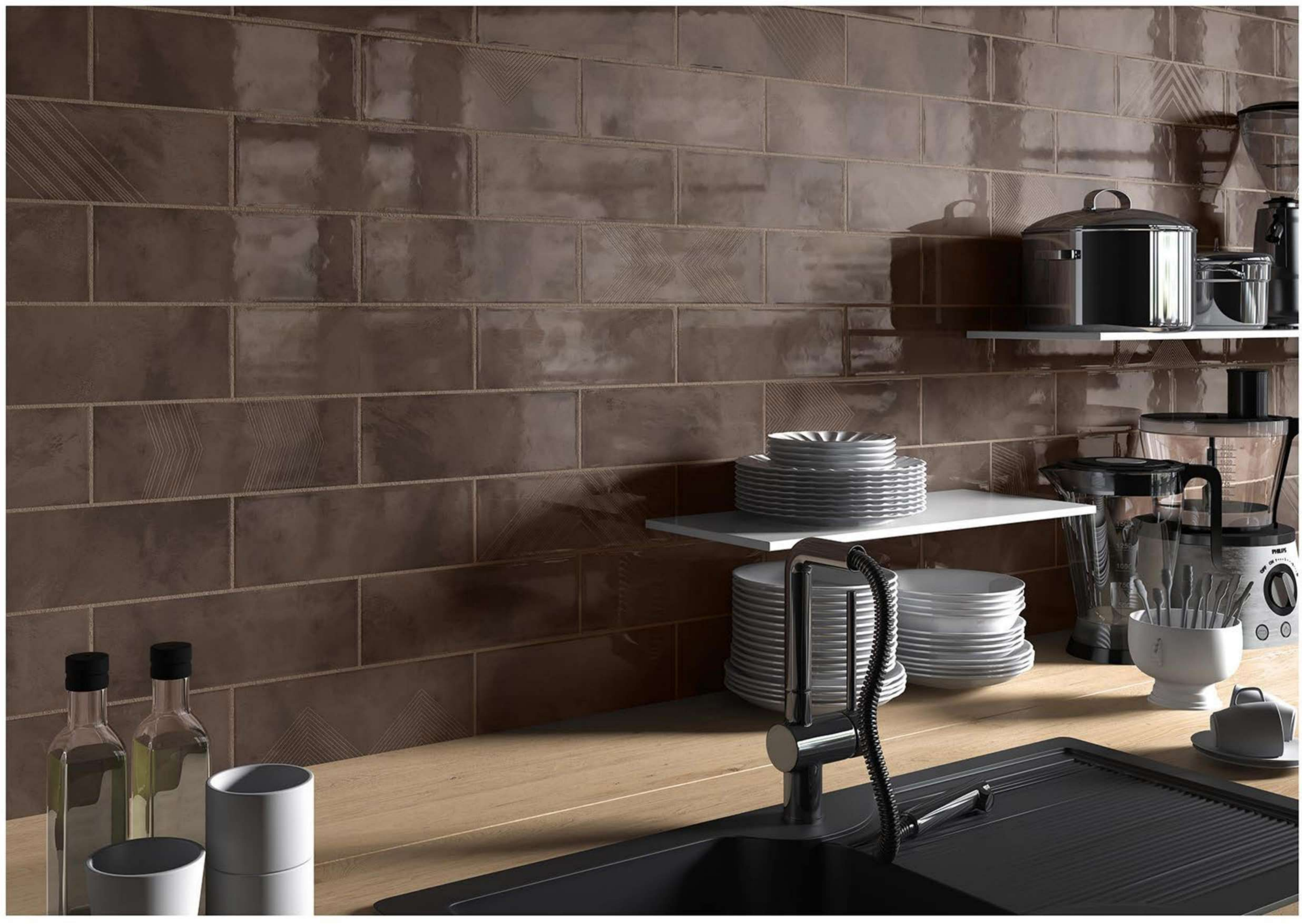


ROME CHOCO



ROME CHOCO ERA





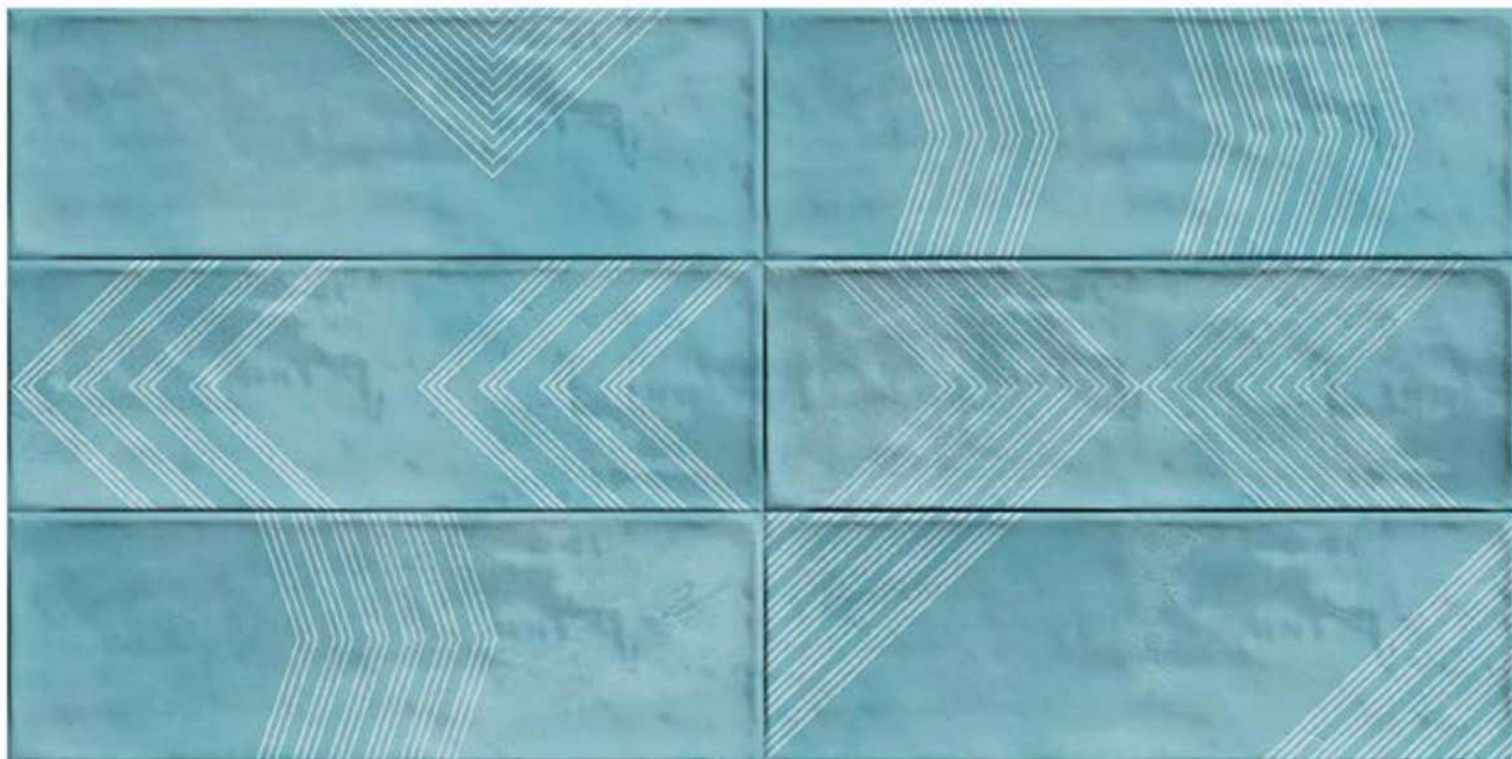
# ROME AQUA

4" X 12"

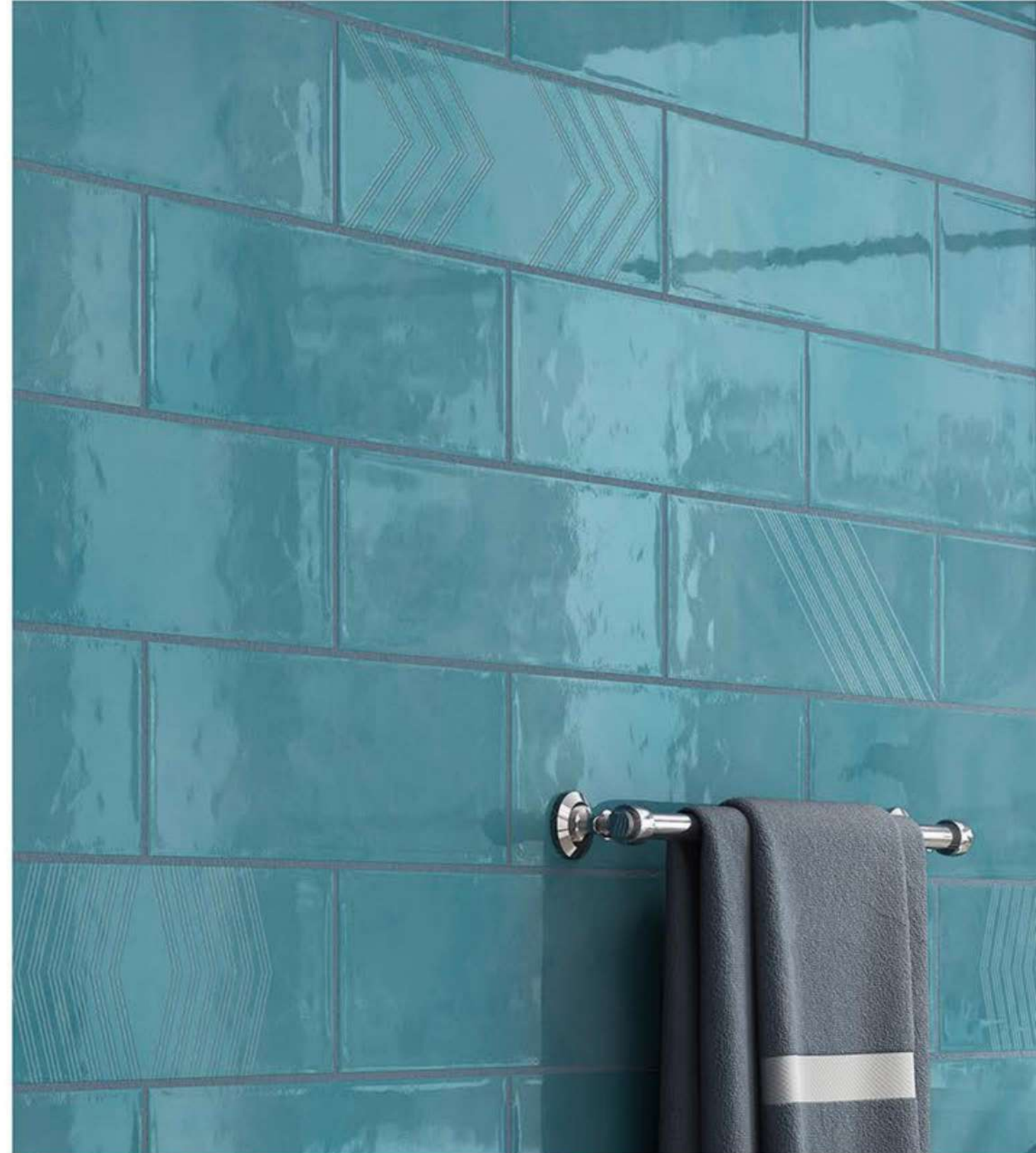
Rome Aqua has a vibrant, striking tone, making it a wonderful accent in designs. You can combine it with other cool colors like dark grays or black, or you can pair it with warm colors like yellows or bright oranges for something that pops.

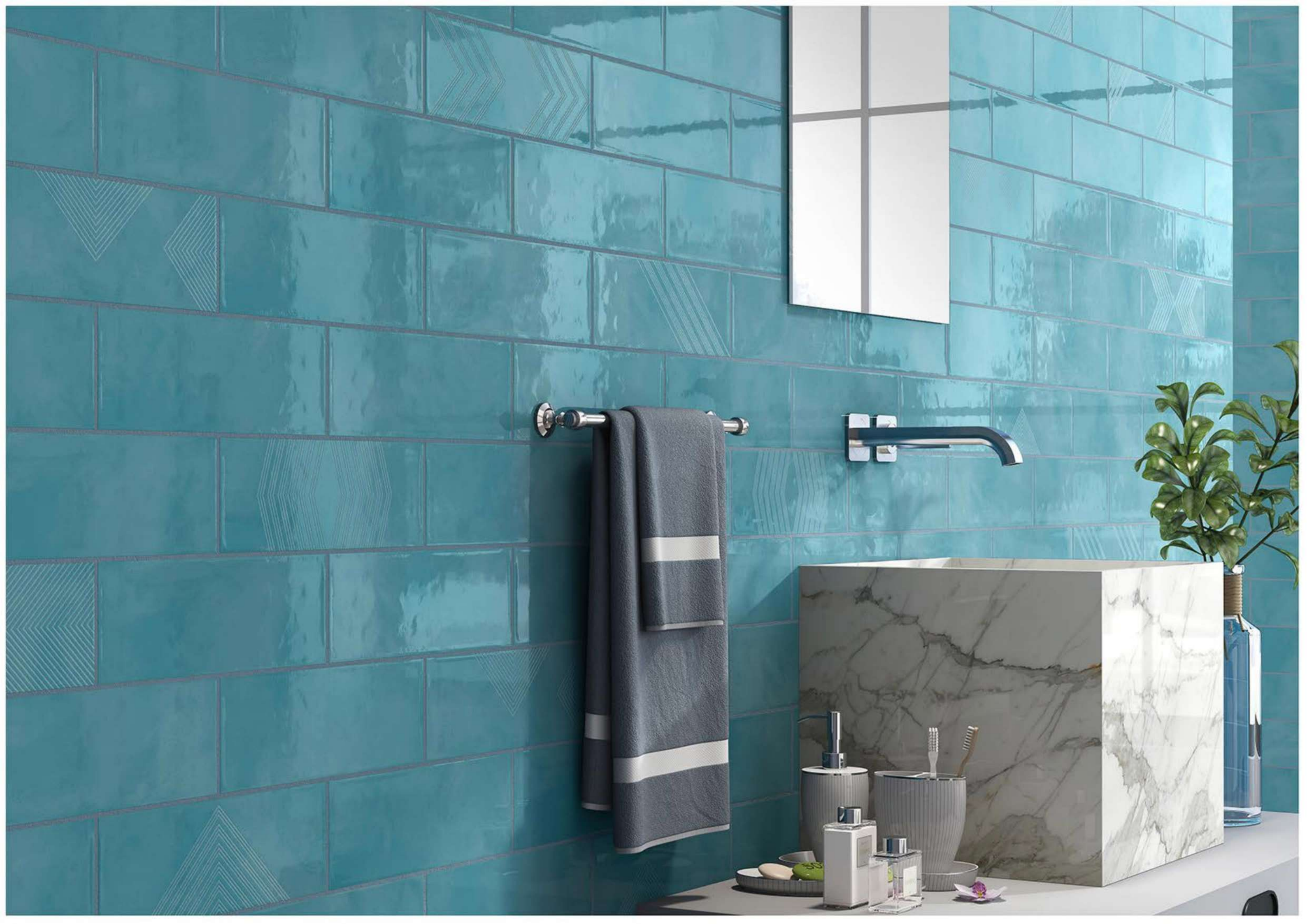


ROME AQUA



ROME AQUA ERA





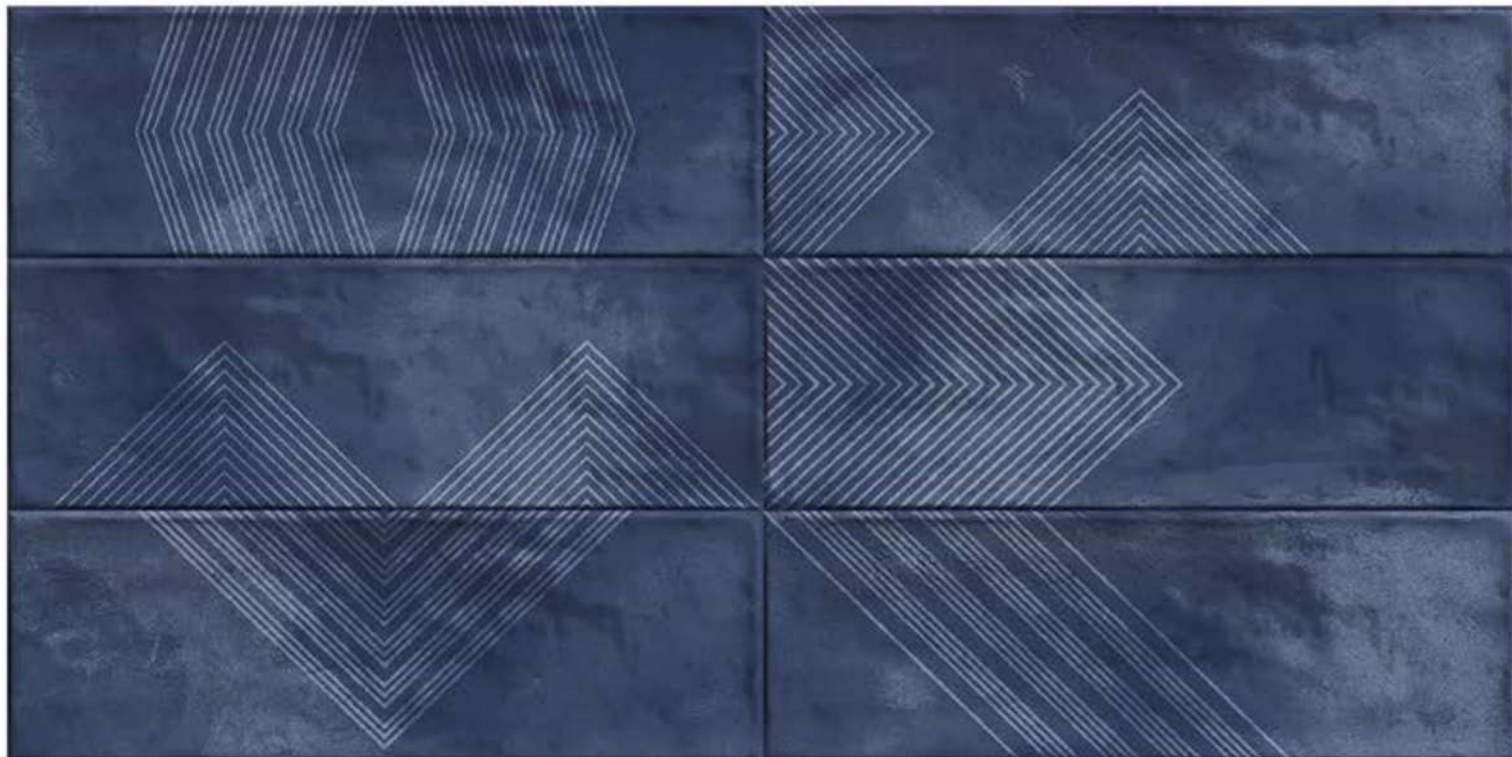
# ROME BLUE

4" X 12"

Rome Blue has more complex and contradictory meanings than any other color. These can be easily explained by pinpointing by the specific shade of blue.



ROME BLUE



ROME BLUE ERA





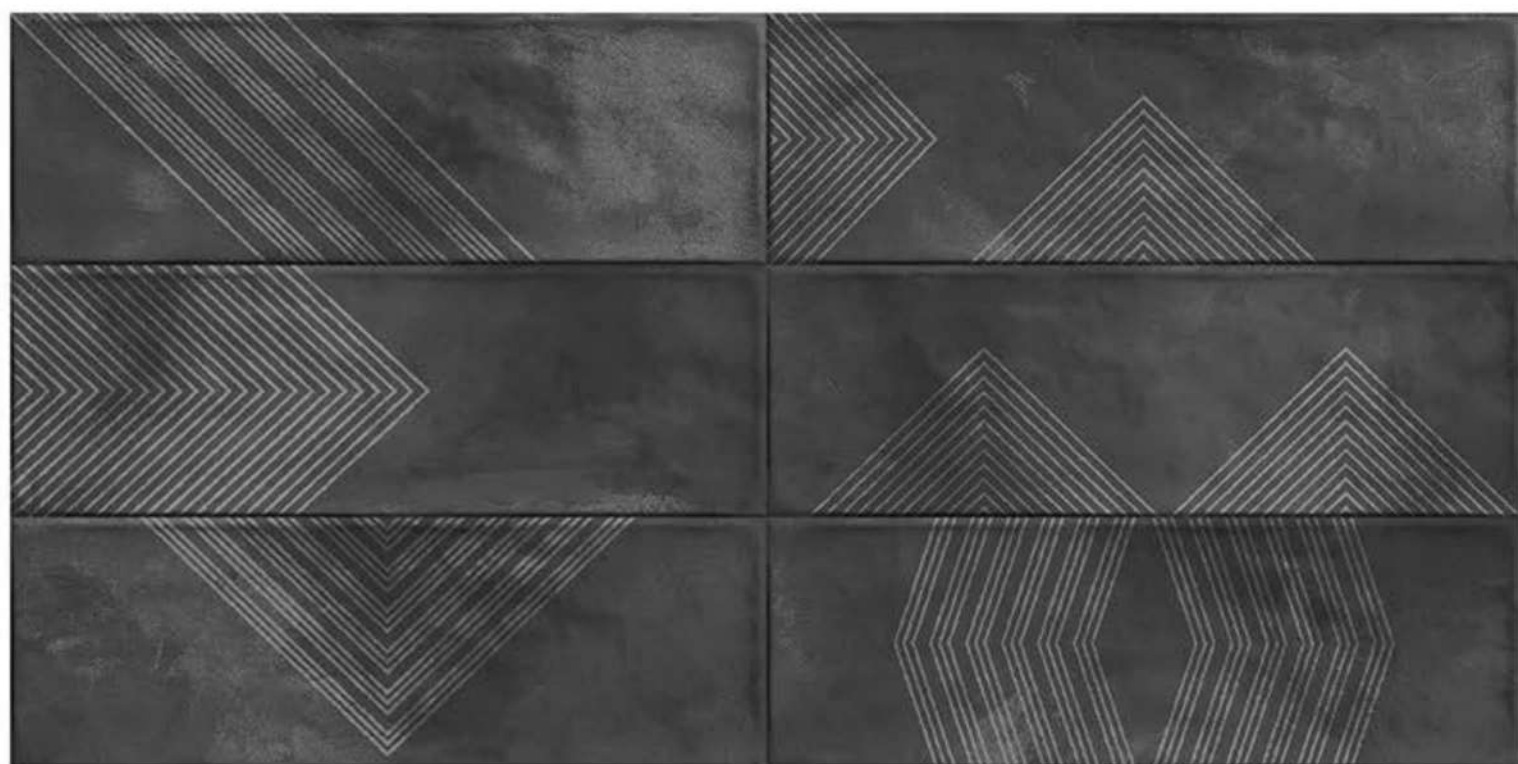
# ROME CHARCOL

4" X 12"

Rome charcol is the color of intellect and of compromise. It's a diplomatic color, negotiating all the distance between black and white. We typically consider gray to be conservative, elegant, and cool, though it can be a bit mysterious.



ROME CHARCOL



ROME CHARCOL ERA







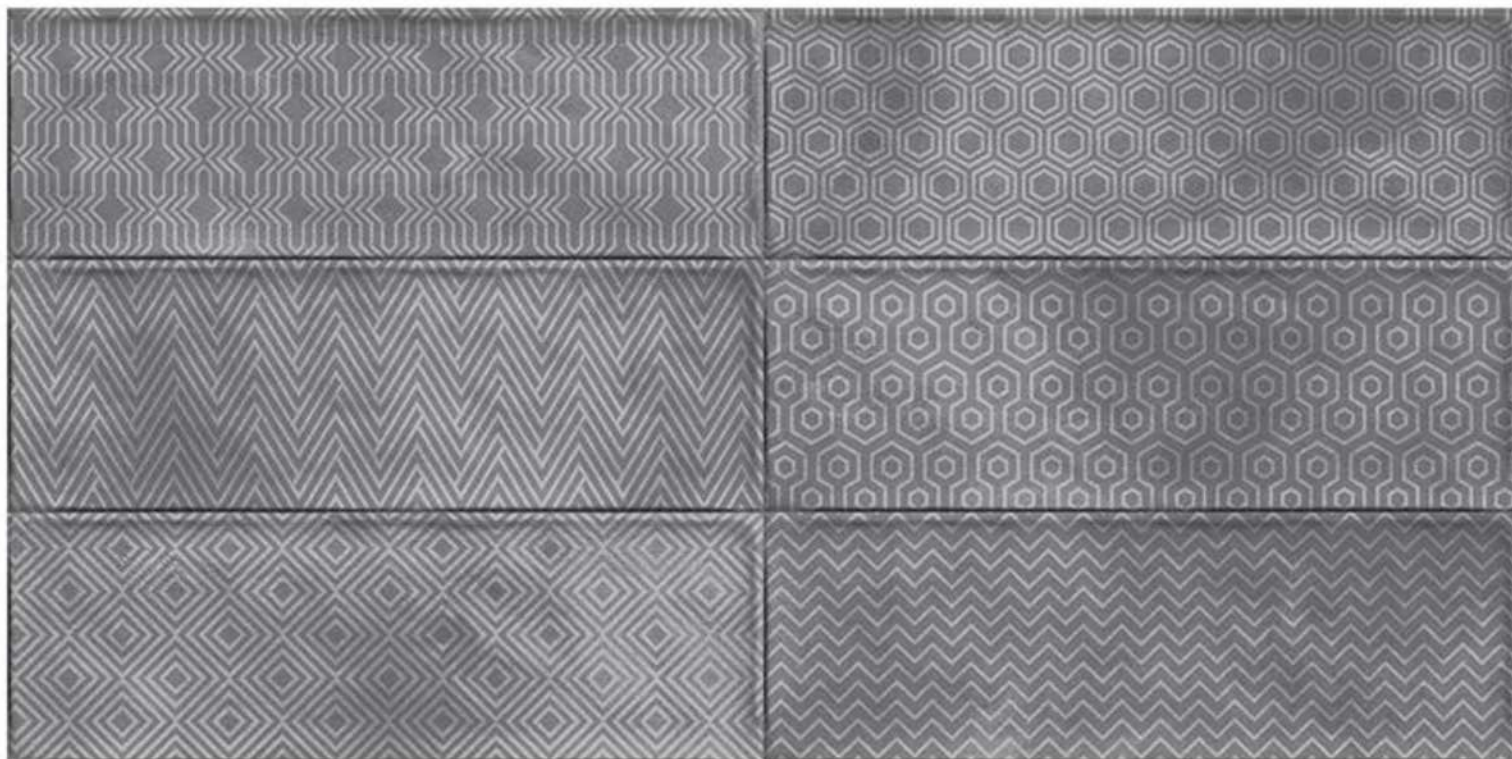
# ROME GRAY

4" X 12"

Rome grey represents neutrality and balance. Its color meaning likely comes from being the shade between white and black. However, grey does carry some negative connotations.



ROME GRAY



ROME GRAY GEO





So  
fresh  
& so  
clean  
clean

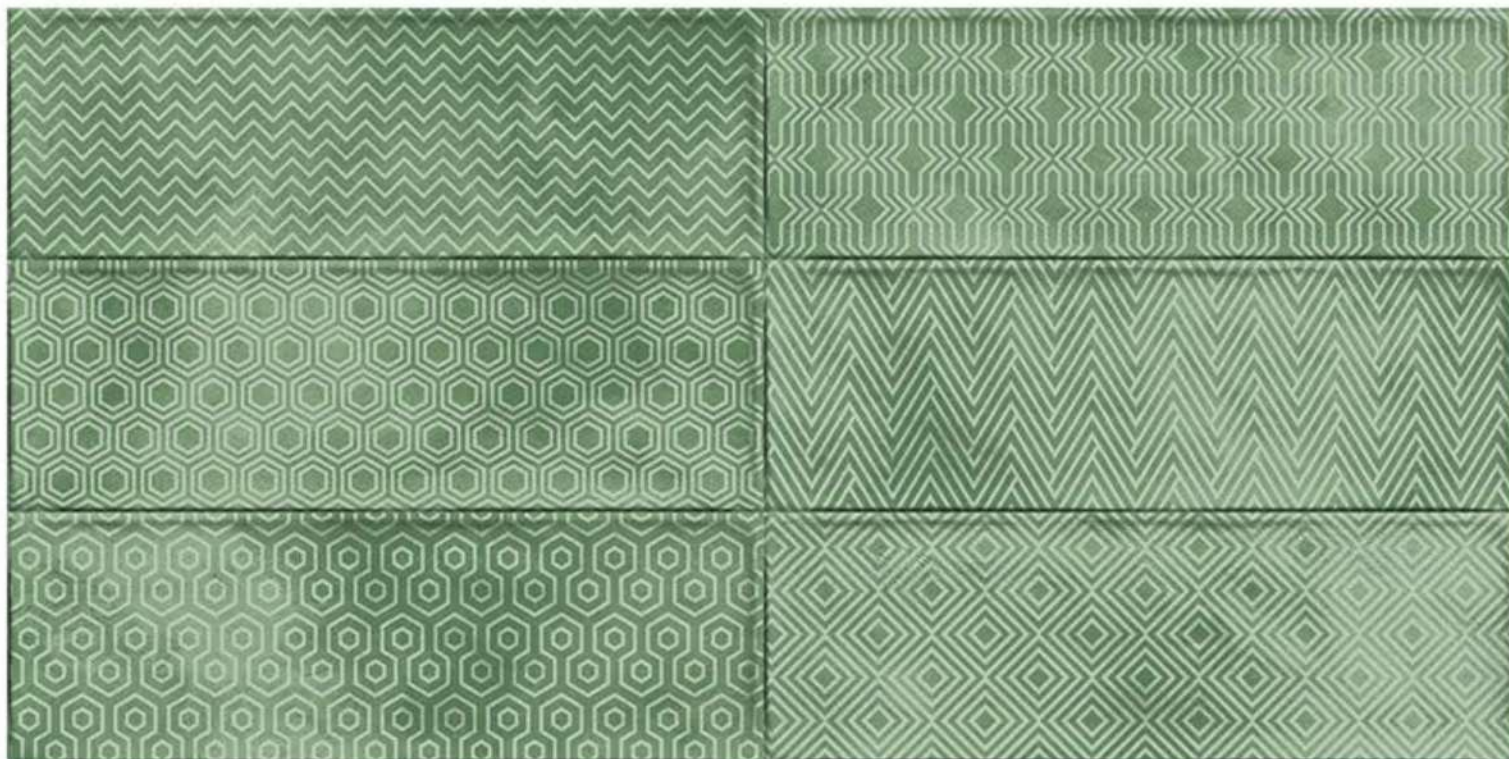
# ROME GREEN

4" X 12"

Rome Green is a cool color that symbolizes nature and the natural world. Perhaps because of its strong associations with nature, green is often thought to represent tranquility.



ROME GREEN



ROME GREEN GEO





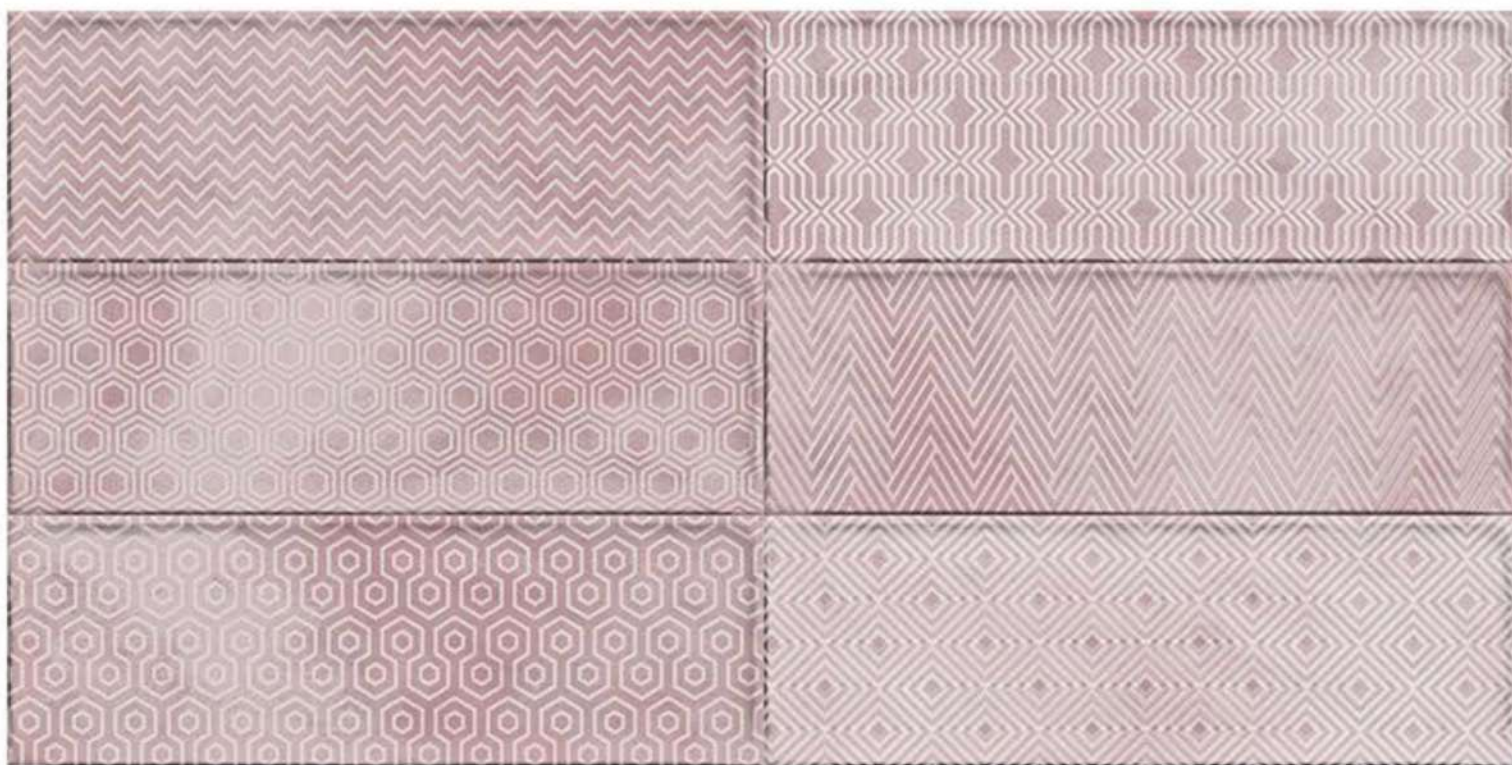
# ROME PINK

4" X 12"

Rome Pink is thought to have a calming effect. One shade known as "drunk-tank pink" is sometimes used in prisons to calm inmates.



ROME PINK



ROME PINK GEO

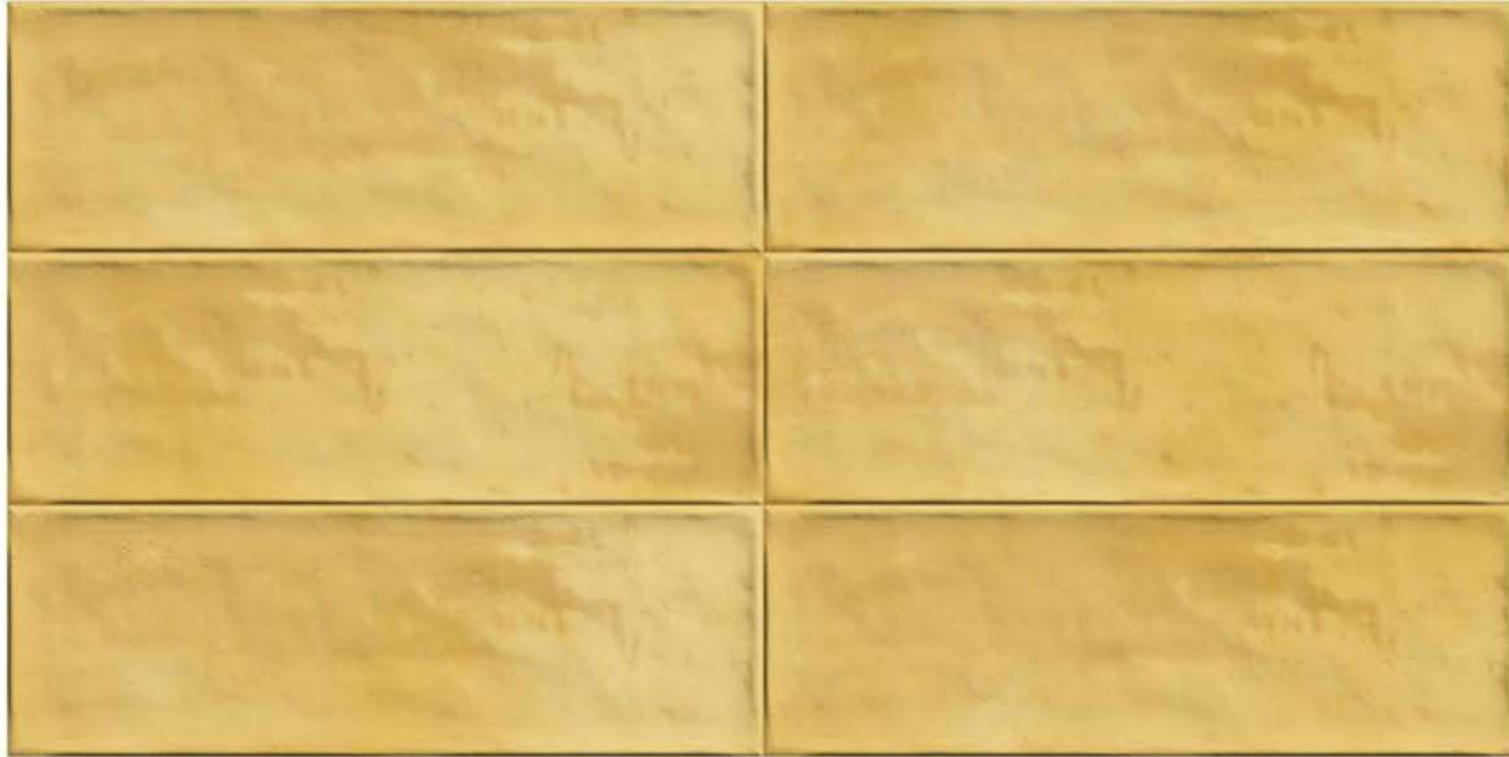




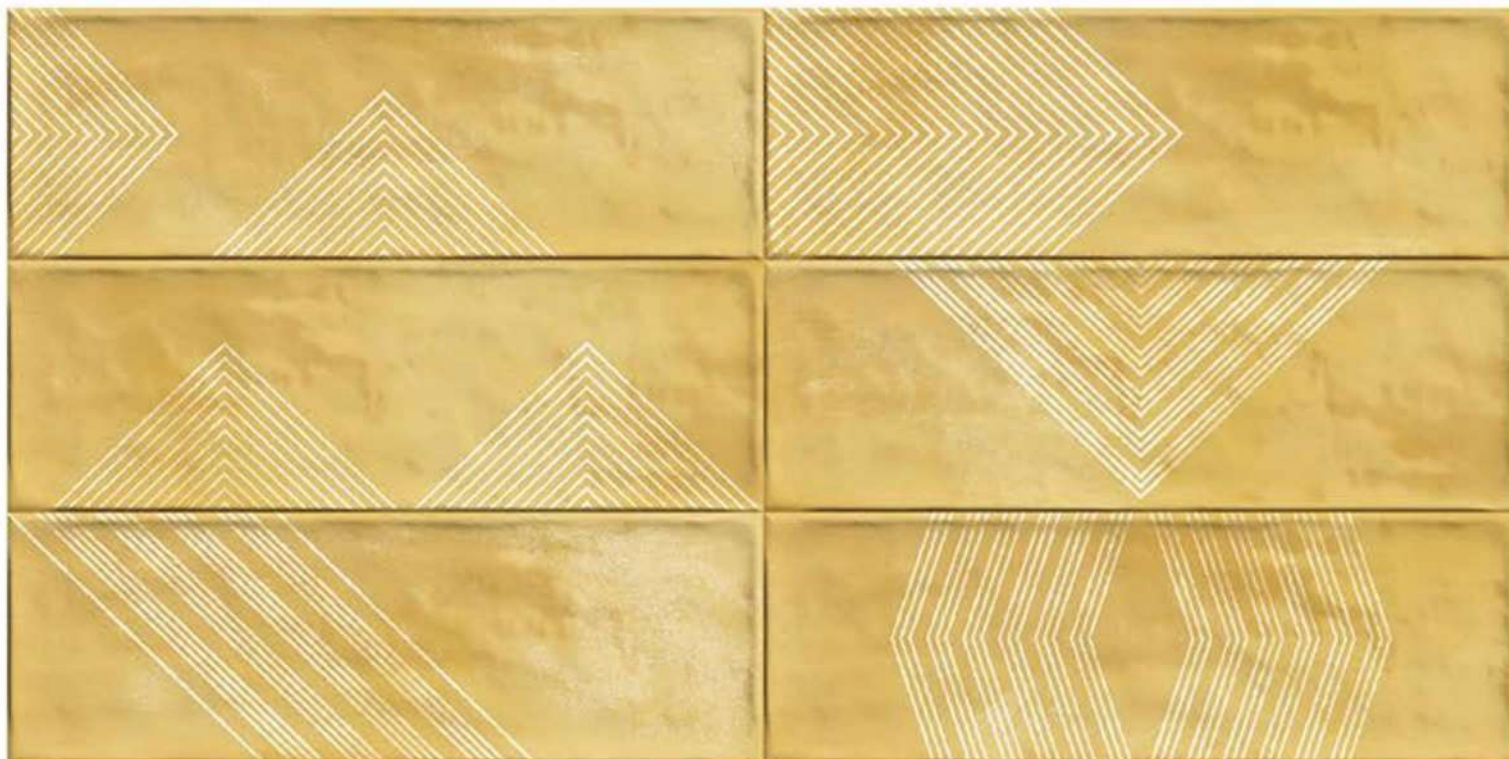
# ROME YELLOW

4" X 12"

Rome Yellow's positive qualities of yellow can also lead to abrasion when it is used too dramatically. While it can be attention grabbing, it can also lead to agitation in the observer. Though it appears warm and bright, yellow can lead to visual fatigue.



ROME YELLOW



ROME YELLOW ERA









8 mm

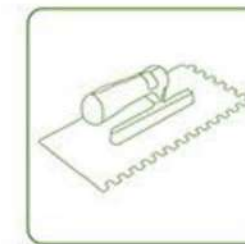
# SMART SOLUTION FOR RENOVATIONS

SOLUZIONI INTELLIGENTI PER LA RISTRUTTURAZIONE



## IDEAL FOR RENOVATIONS

Ideal for renovations  
Thickness of glue and tile less than 1 cm



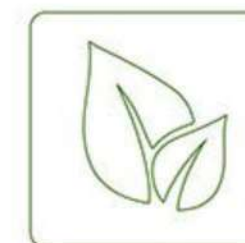
## EASY AND FAST TO INSTALL

Easy to install  
Save 35% of installation time



## ULTRA LIGHTWEIGHT MATERIAL

Ultralight material  
40% weight reduction



## GREATER ENVIRONMENTAL SUSTAINABILITY

Highly eco-friendly  
The efficient use of raw materials reduces the CO2 emissions

Environmental  
Authorization  
Included.



Packing	Size/mm	Pc/Box	Kg/Box	Covrage area
Rome	100 x 300	33	13.50 approx	10.76sq.ft./ 0.99sq.mtr