

CUBE
COLLECTION

200X200MM

MATT &
MATT WITH LUSTER

**THE
ART
OF
LUSTER**

colortile
ceramics & innovation

Color Granito Pvt. Ltd.

At. Ratavirda Village,
Sartanpar Road, Tal. Wankaner - 363 621,
Dist. Morbi, Gujarat, INDIA

Cell: +91 75678 11311

export@colortile.in | www.colortile.in



colortile
ceramics & innovation

colortile
ceramics & innovation

CUBE
COLLECTION

By

colortile
ceramics & innovation

QUALITY
IN
EVERY
SQUARE



FROST
PROOF



ABSORPTION
RESISTANCE



EASY
TO INSTALL



STAIN
RESISTANCE



EASY TO
CLEAN



ECOLOGICAL



CHEMICAL
RESISTANCE



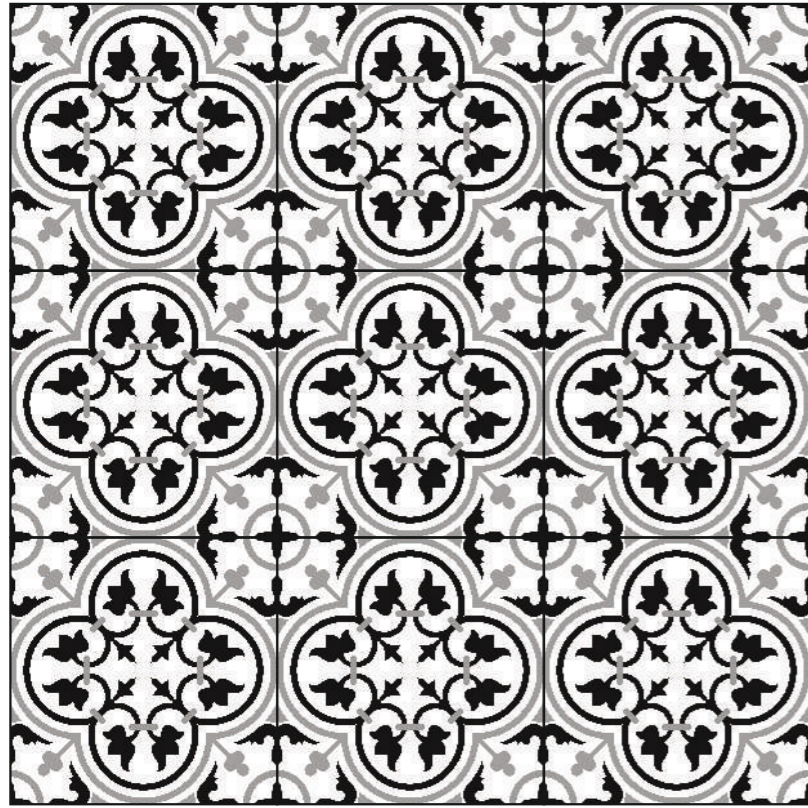
SCRATCH
RESISTANCE



THERMIC IMPACT
RESISTANCE

200X200MM

MATT WITH LUSTER



CLASSIC CUBE



FLOOR



WALL



High Tensile Strength



Environment Friendly



Abrasion Resistant



Heat & Fire Resistant



Chemical Resistant



Less Water Absorption

www.colortile.in

CUBE
COLLECTION

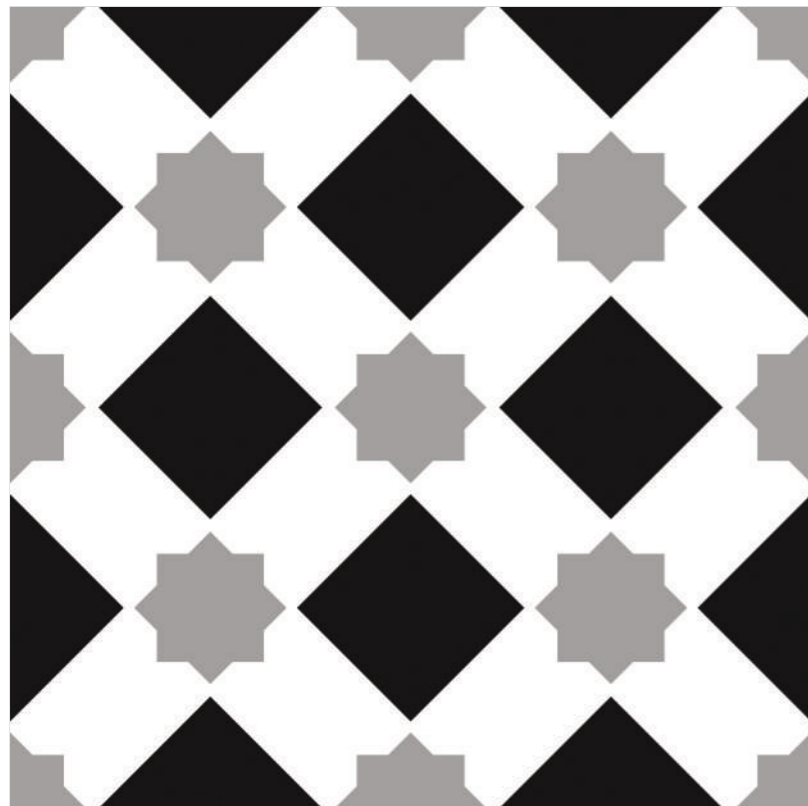
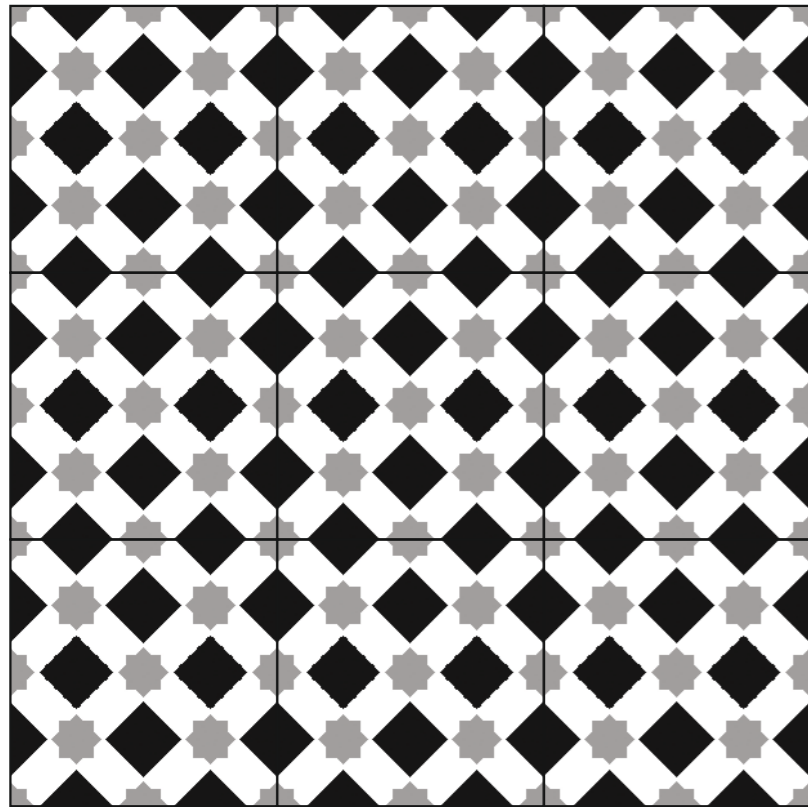
By

colortile
ceramics & innovation



200X200MM

MATT WITH LUSTER



MATRIX CUBE



FLOOR



WALL



High Tensile Strength



Environment Friendly



Abrasion Resistant



Heat & Fire Resistant



Chemical Resistant



Less Water Absorption

www.colortile.in

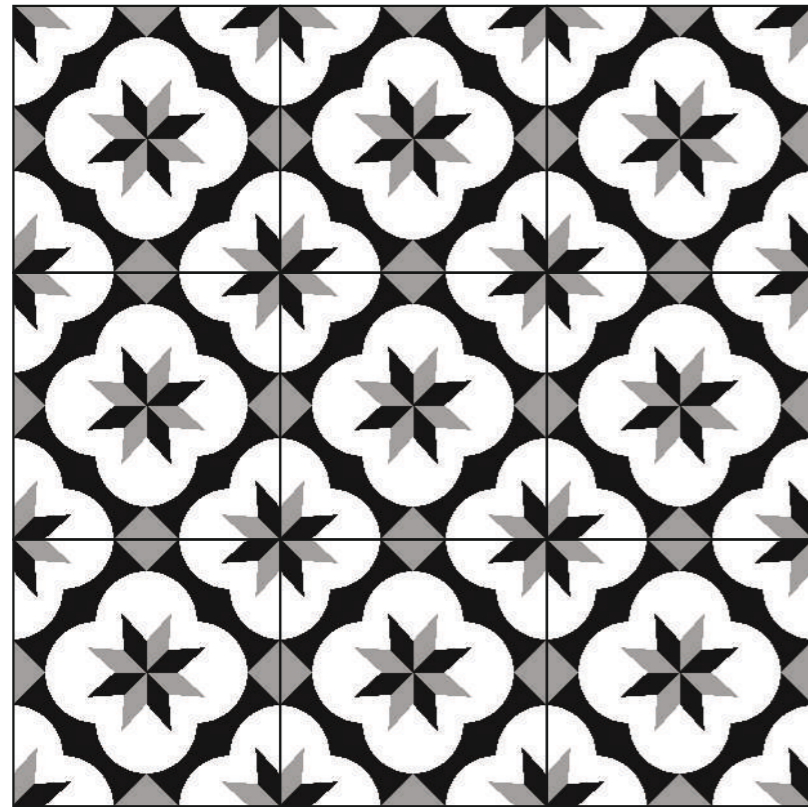
CUBE
COLLECTION

By

colortile
ceramics & innovation



200X200MM
MATT WITH LUSTER



QUAD CUBE



www.colortile.in

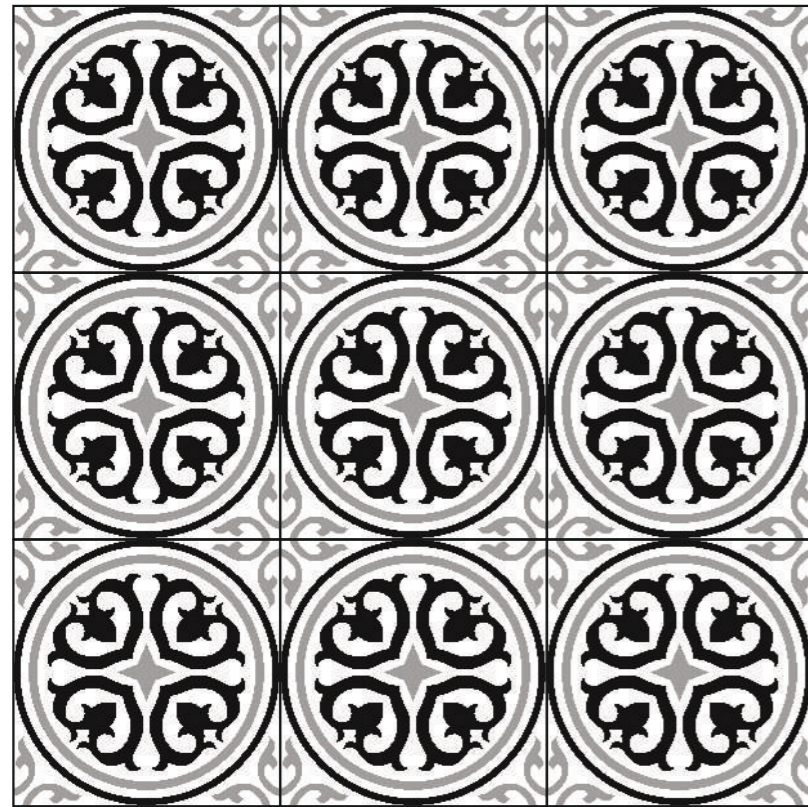
CUBE
COLLECTION

By

colortile
ceramics & innovation



200X200MM
MATT WITH LUSTER



VINTAGE CUBE



FLOOR



WALL



High Tensile Strength



Environment Friendly



Abrasion Resistant



Heat & Fire Resistant



Chemical Resistant



Less Water Absorption

www.colortile.in

CUBE
COLLECTION

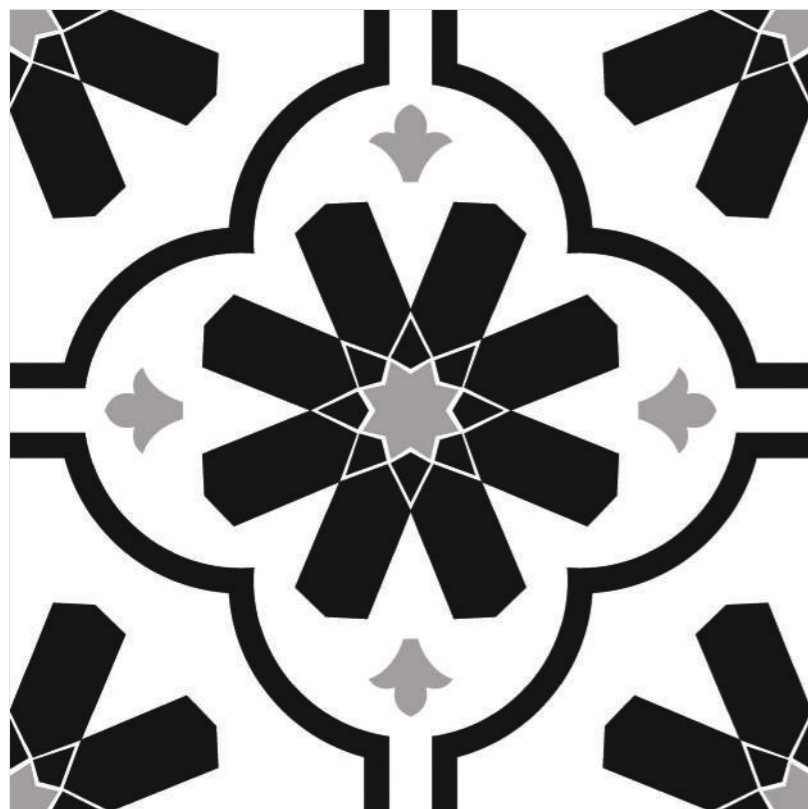
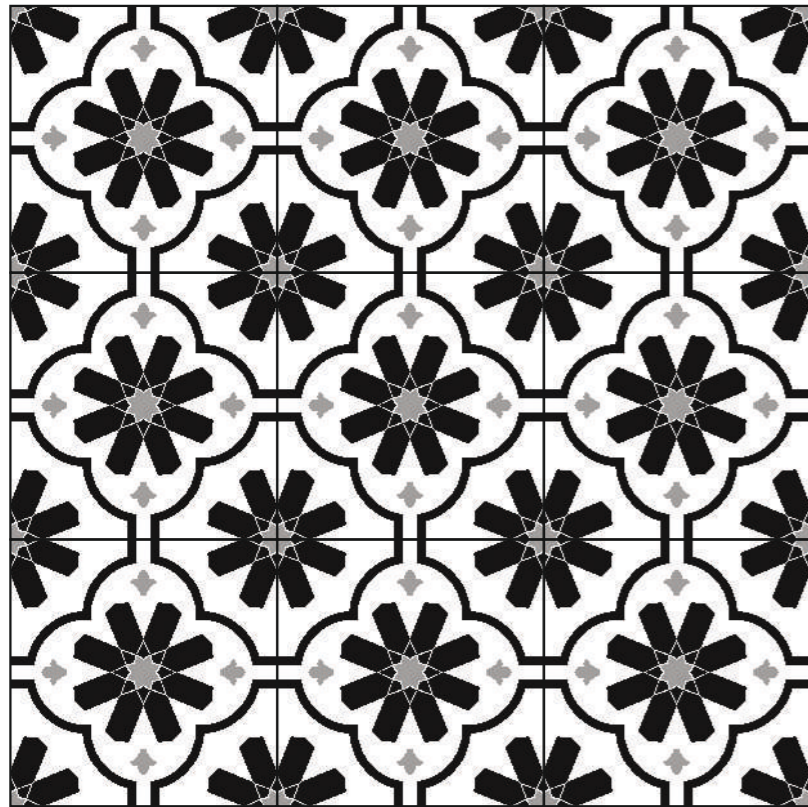
By

colortile
ceramics & innovation



200X200MM

MATT WITH LUSTER



CROWN CUBE



FLOOR



WALL



High Tensile Strength



Environment Friendly



Abrasion Resistant



Heat & Fire Resistant



Chemical Resistant



Less Water Absorption

www.colortile.in

CUBE
COLLECTION

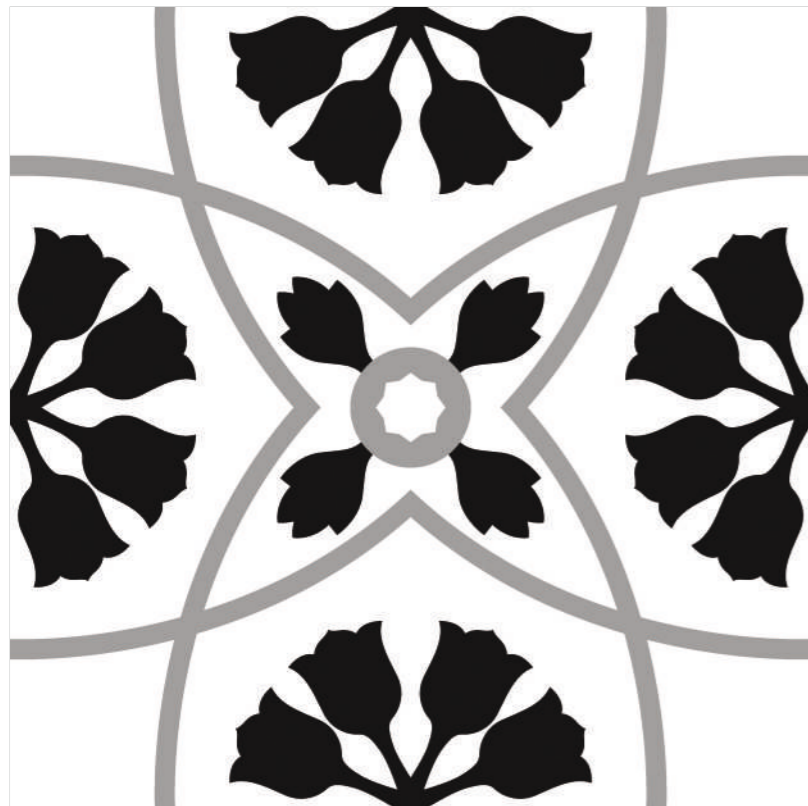
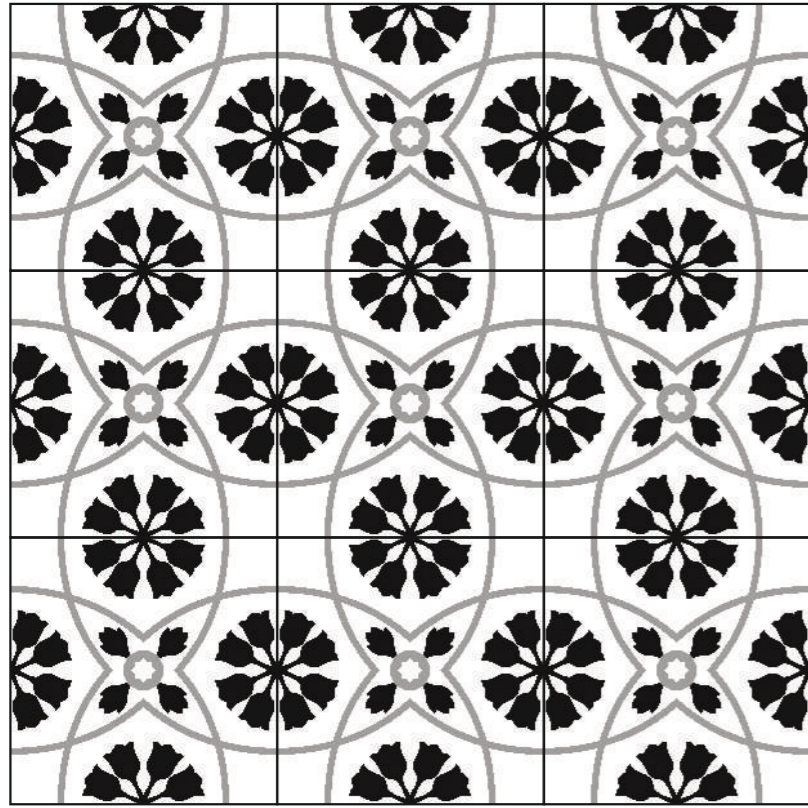
By

colortile
ceramics & innovation



200X200MM

MATT WITH LUSTER



DECENT CUBE



FLOOR



WALL



High Tensile Strength



Environment Friendly



Abrasion Resistant



Heat & Fire Resistant



Chemical Resistant



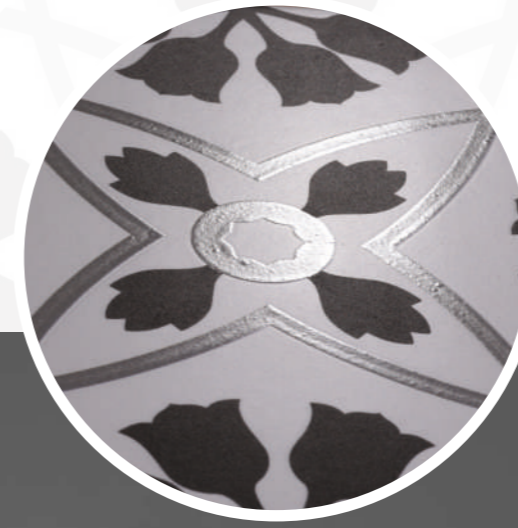
Less Water Absorption

www.colortile.in

CUBE
COLLECTION

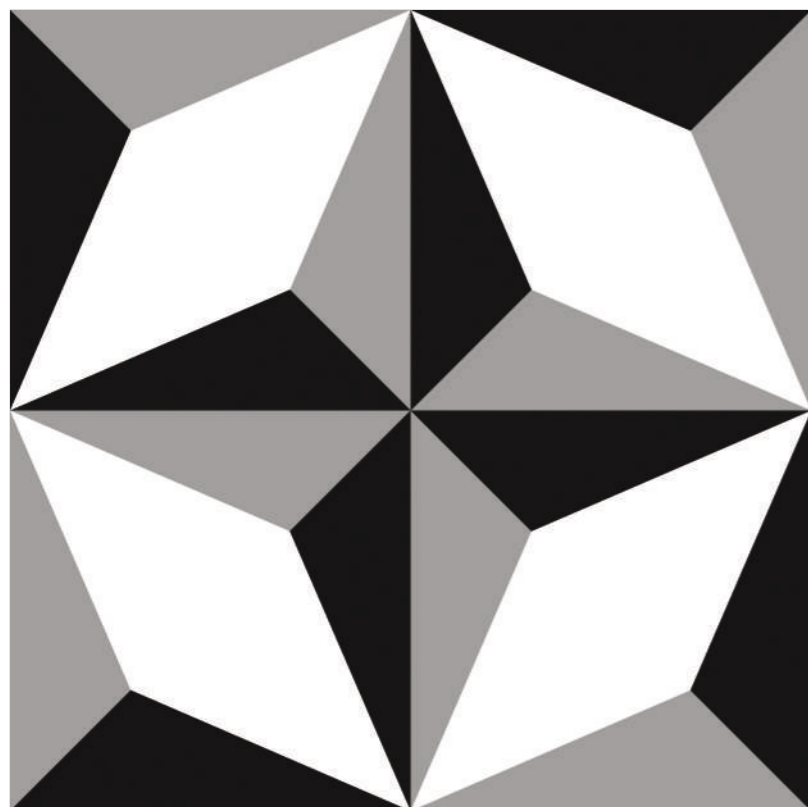
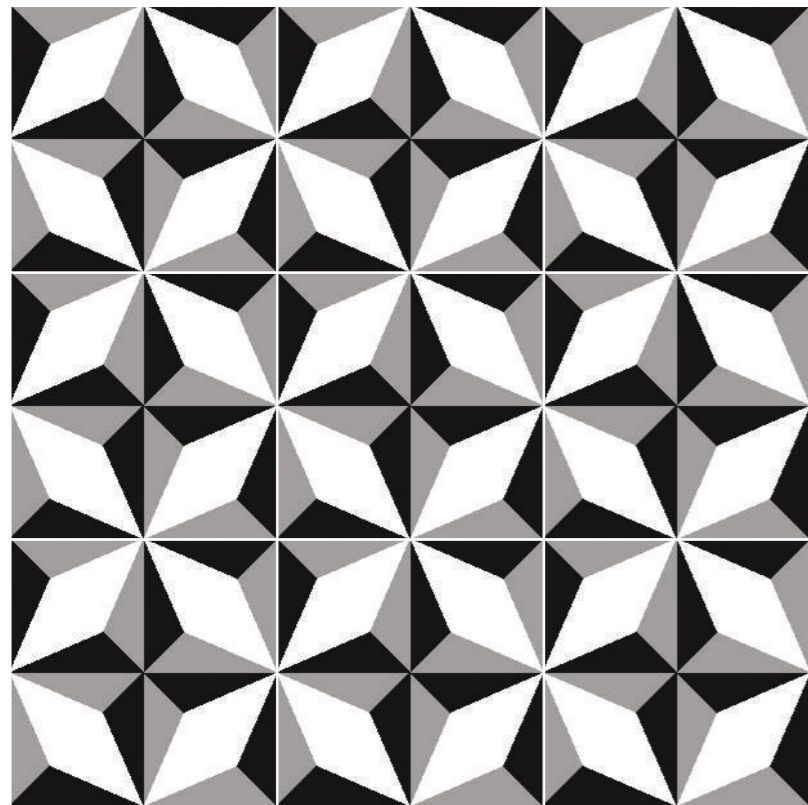
By

colortile
ceramics & innovation



200X200MM

MATT WITH LUSTER



MONOLINE CUBE



FLOOR



WALL



High Tensile Strength



Environment Friendly



Abrasion Resistant



Head & Fire Resistant



Chemical Resistant



Less Water Absorption

www.colortile.in

CUBE
COLLECTION

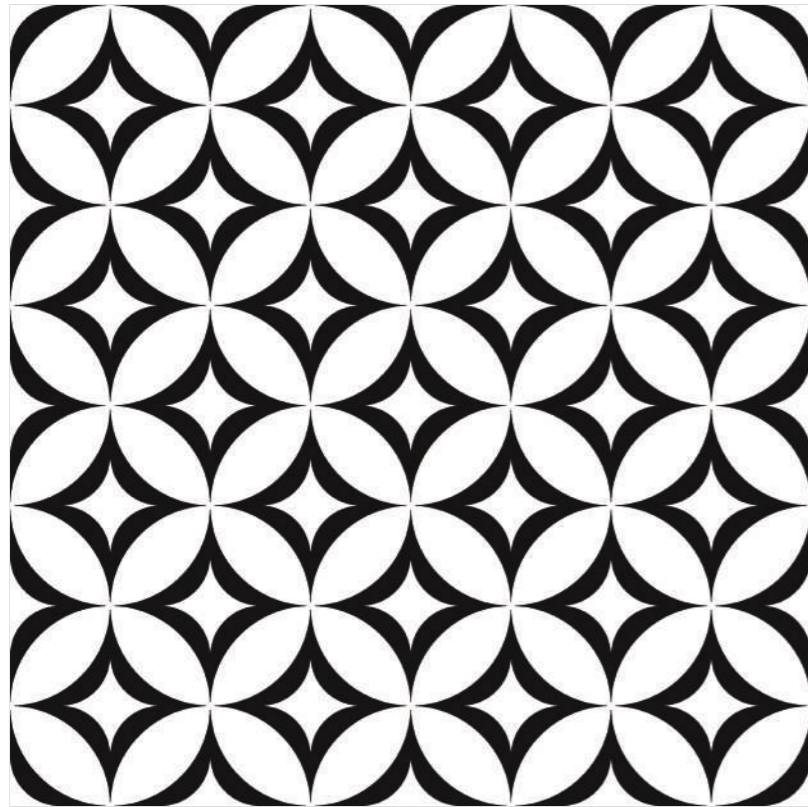
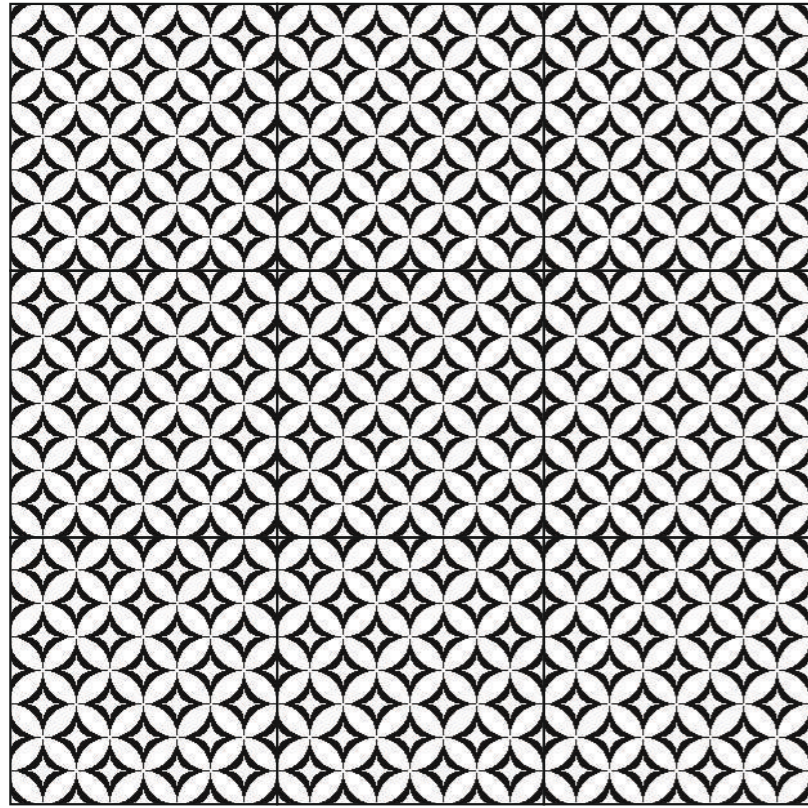
By

colortile
ceramics & innovation



200X200MM

MATT



FERRIS CUBE



FLOOR



WALL



High Tensile Strength



Environment Friendly



Abrasion Resistant



Heat & Fire Resistant



Chemical Resistant



Less Water Absorption

www.colortile.in

CUBE
COLLECTION

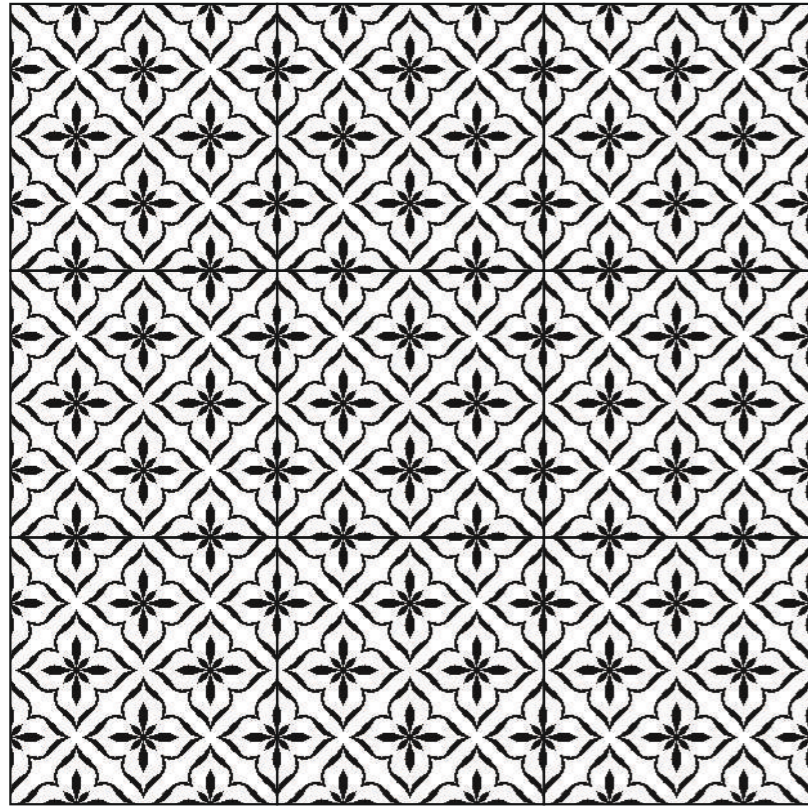
By

colortile
ceramics & innovation



200X200MM

MATT



ANTIQUÉ CUBE



FLOOR



WALL



High Tensile Strength



Environment Friendly



Abrasion Resistant



Heat & Fire Resistant



Chemical Resistant



Less Water Absorption

www.colortile.in

CUBE
COLLECTION

By

colortile
ceramics & innovation



CUBE
COLLECTION

Size	200x200mm
Thickness	10mm
Pcs/Box	20 pcs.
Kg/Box	13.300 kg.
Coverage Area	8.61 sq. ft./0.800 sq.mtr.

colortile
ceramics & innovation