

colortile
ceramics & innovation

THE ART OF GRACE

200X200MM
MATT WITH LUSTER

miami
COLLECTION

colortile
ceramics & innovation

Color Granito Pvt. Ltd.

At. Ratavirda Village,
Sartanpar Road, Tal. Wankaner - 363 621,
Dist. Morbi, Gujarat, INDIA

Cell: +91 75678 11311

export@colortile.in | www.colortile.in



colortile
ceramics & innovation

miami
COLLECTION

**200X
200MM**



www.colortile.in



FROST
PROOF



ABSORPTION
RESISTANCE



EASY
TO INSTALL



STAIN
RESISTANCE



EASY TO
CLEAN



ECOLOGICAL



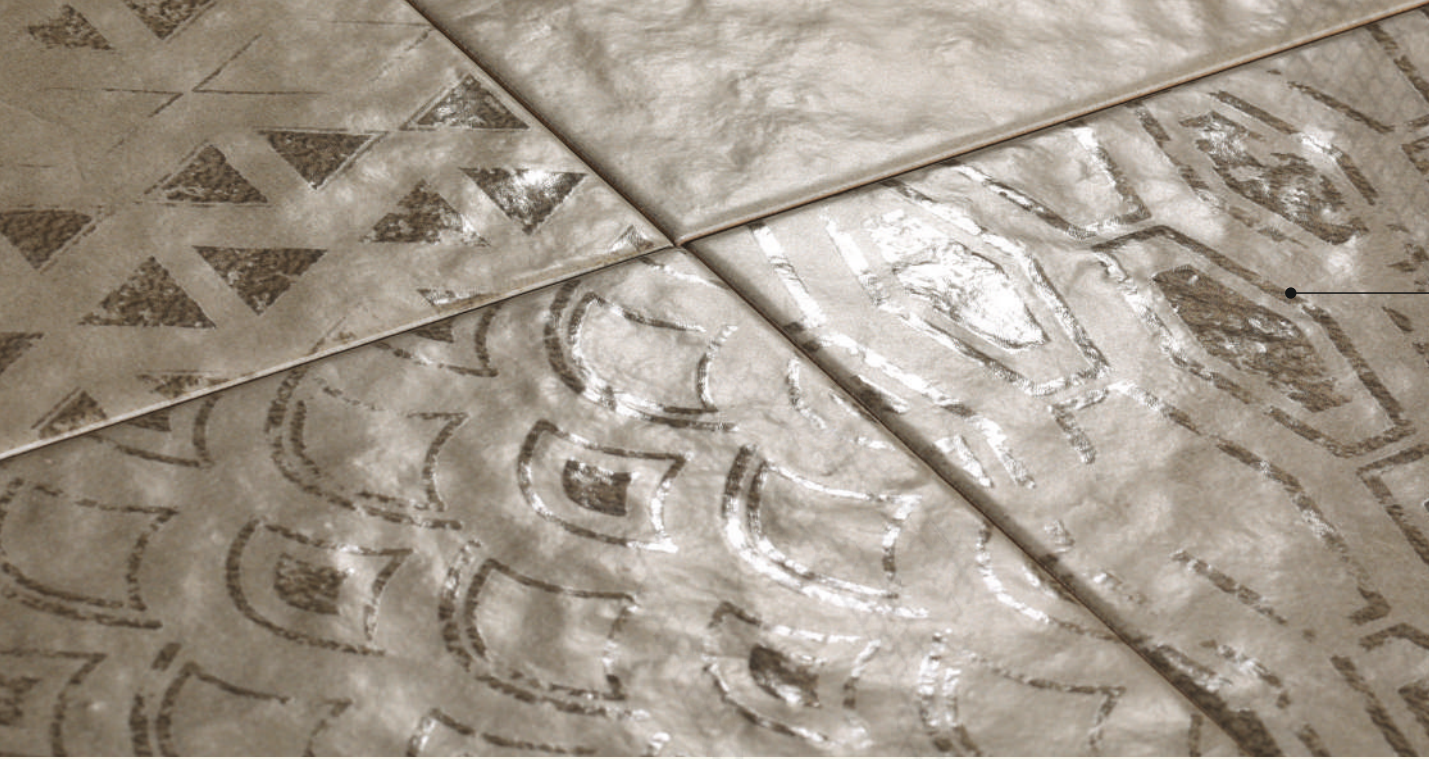
CHEMICAL
RESISTANCE



SCRATCH
RESISTANCE



THERMIC IMPACT
RESISTANCE



**200x
200mm**

**matt with luster
(punch)**



Chemical Resistant



Head & Fire Resistant



Abrasion Resistant



High Tensile Strength



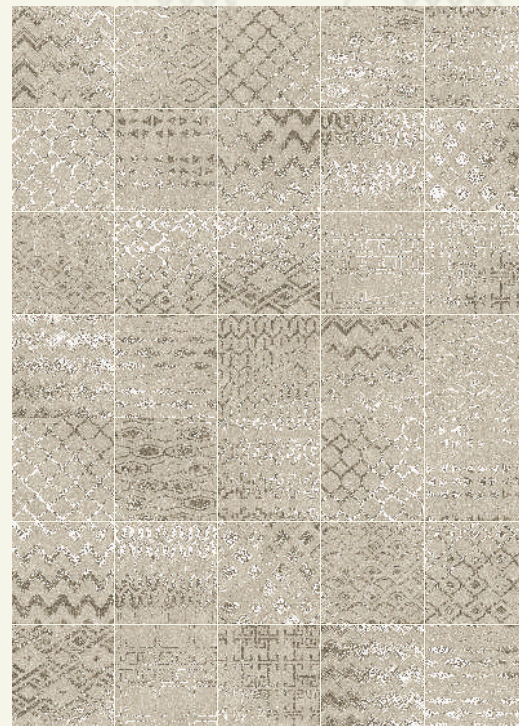
Less Water Absorption



Environment Friendly



GLAM BEIGE



random 36



GLAM BEIGE BASE



random 25



HAVE FUN
LAUGH OFTEN & LOUD
TRUST LIFE
KEEP YOUR BEST LOVE LETTERS
WEAR A SMILE
LET SOMEONE IN
DIVE THE WORLD SOME LOVE

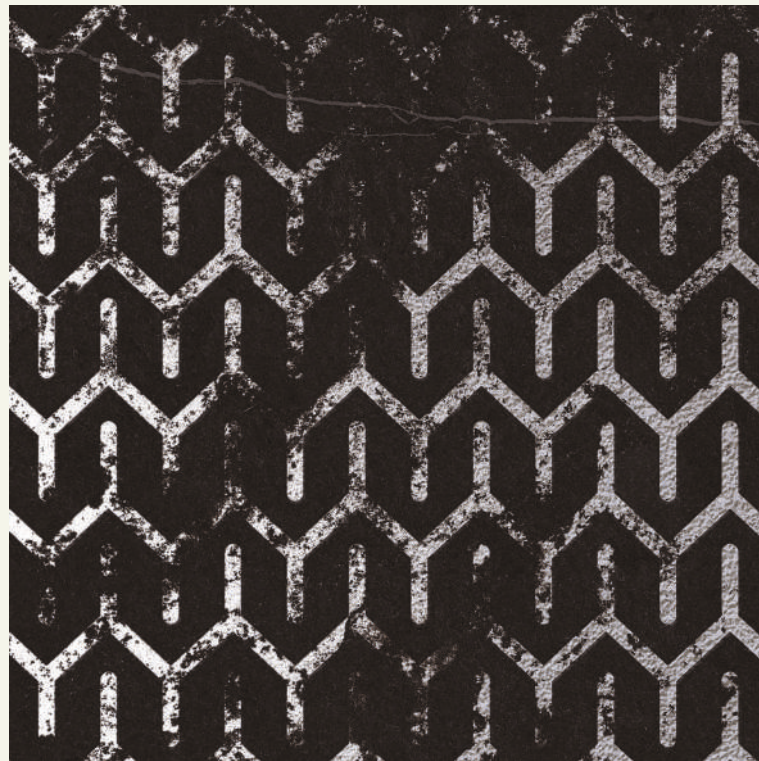
LOVE & LIFE
SOUL, FATI AND A
LITTLE OF THE WORLD
DID I PLAN THAT?
MEMORIES
HORSES, GARDENS, HOME'S
COCKTAILS AND SMOKE
SCOOTER - NO ALCOHOL!
HAPPY BEARS - GARDEN BRICKS
LAUGHING FOR HOURS, FUN

I WANT TO BATHE WITH YOU IN THE SEA
I WANT TO LAY LIKE THIS FOREVER UNTIL THE SKY FALLS DOWN ON ME
I WANT TO BE YOUR DREAM, I'LL BE YOUR WISH I'LL BE YOUR FANTASY, I'LL BE YOUR HOPE
I'LL BE YOUR LOVE, BE EVERYTHING THAT YOU NEED
I'LL LOVE YOU MORE WITH EVERY BREATH TRULY, MADLY, DEEPLY DO
I WANT TO STAND WITH YOU ON A MOUNTAIN
I WANT TO BATHE WITH YOU IN THE SEA
I WANT TO LAY LIKE THIS FOREVER UNTIL THE SKY FALLS DOWN ON ME
MARK & LISA 09.10.01

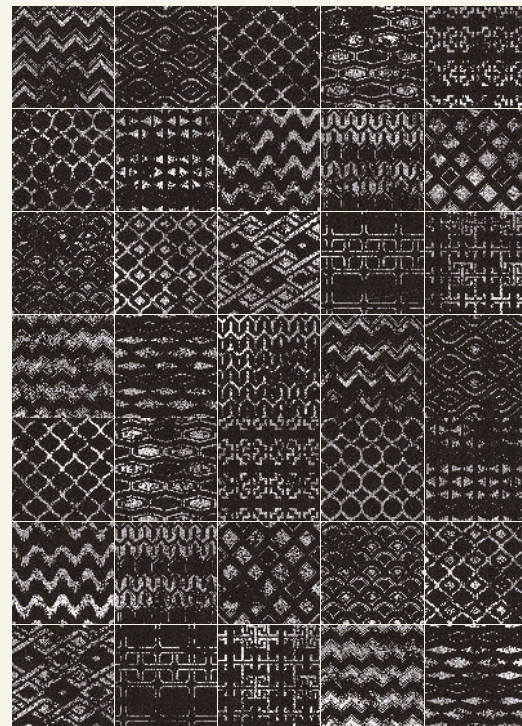


- Chemical Resistant
- Head & Fire Resistant
- Abrasion Resistant
- High Tensile Strength
- Less Water Absorption
- Environment Friendly

**200x
200mm**
matt with luster
(punch)



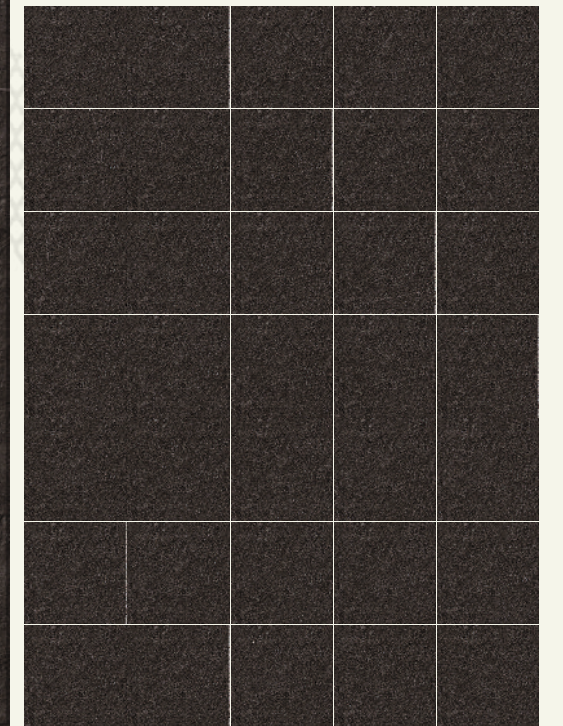
GLAM COFFEE



random 36

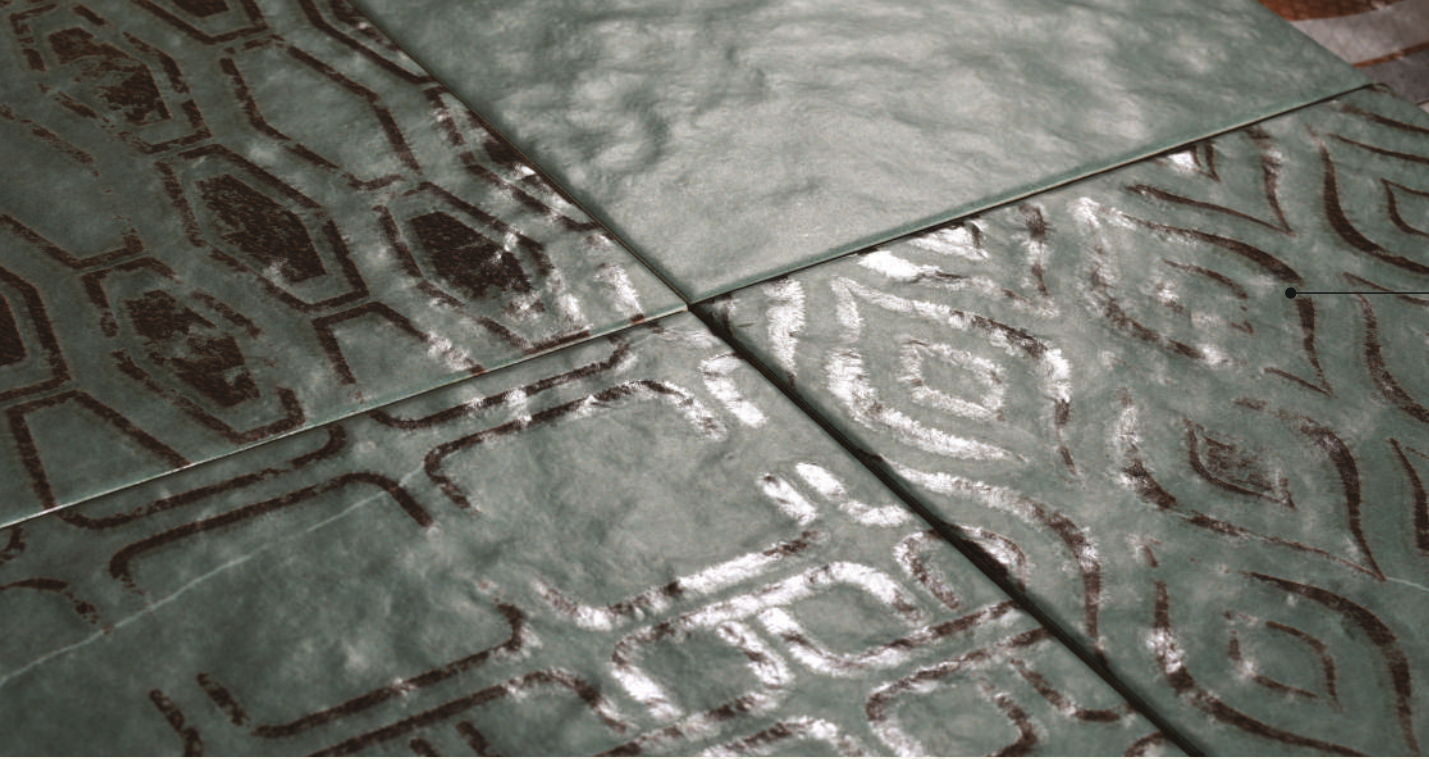


GLAM COFFEE BASE



random 36





**200x
200mm**

matt with luster
(punch)



Chemical
Resistant



Heat & Fire
Resistant



Abrasion
Resistant



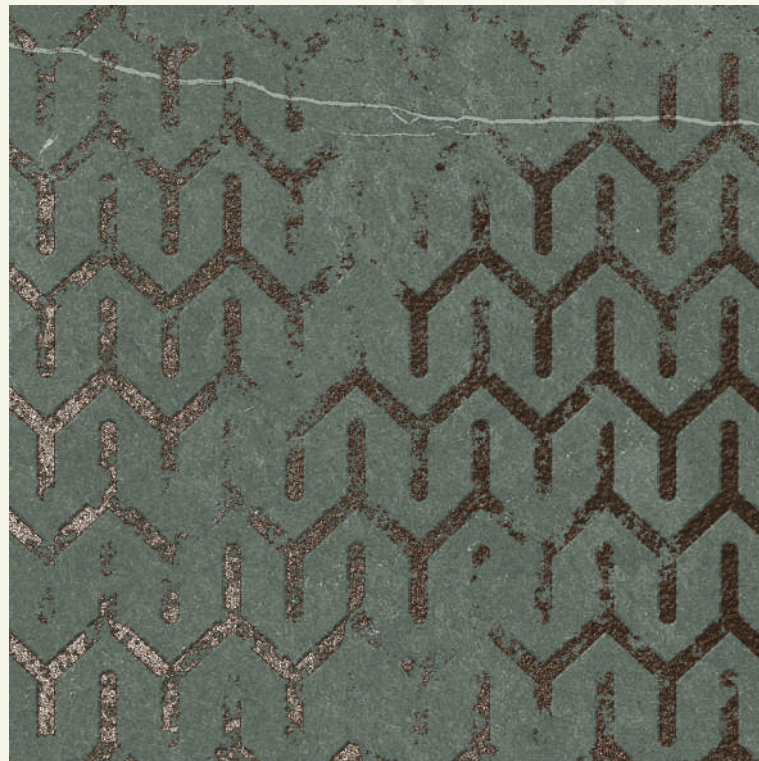
High Tensile
Strength



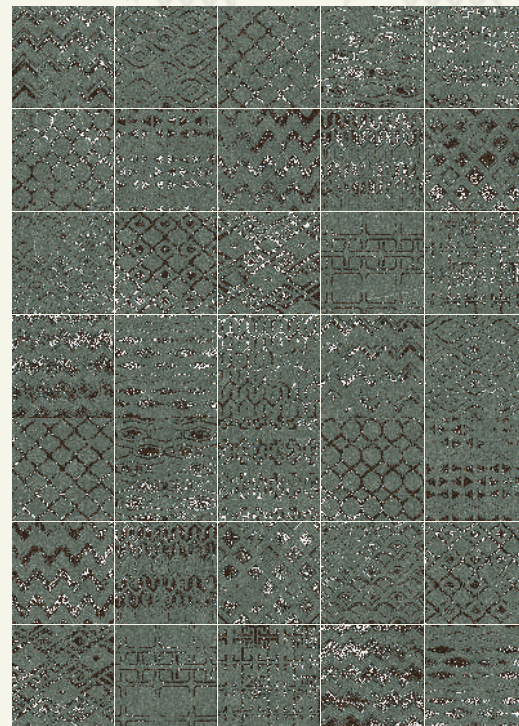
Less Water
Absorption



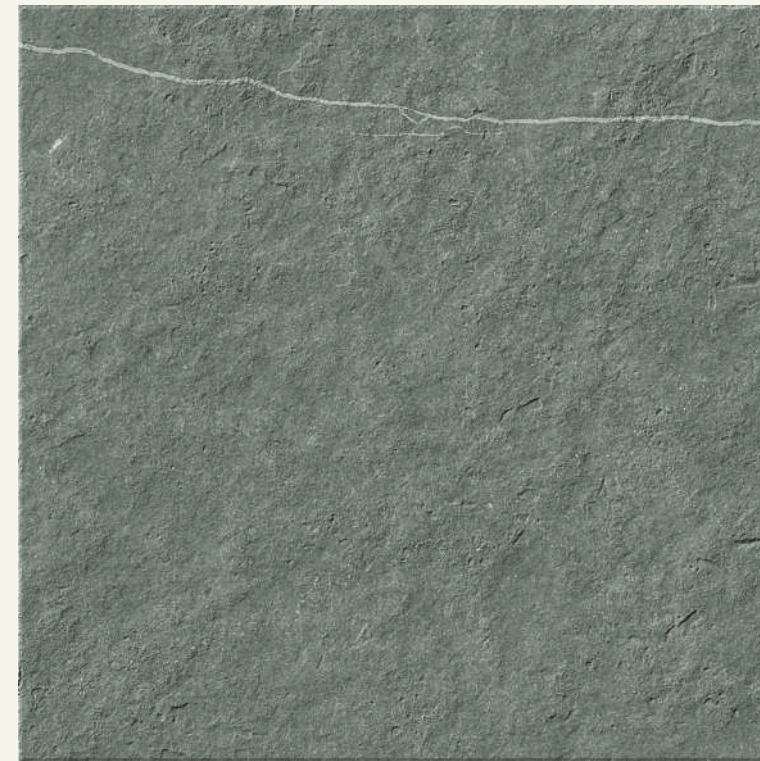
Environment
Friendly



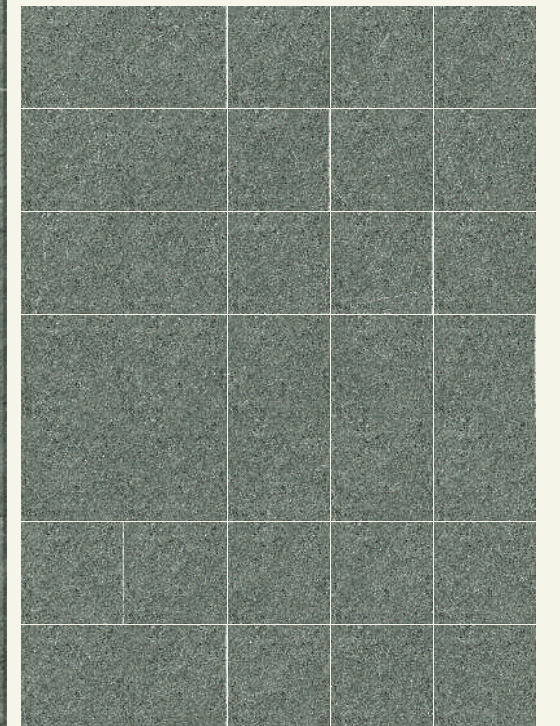
GLAM GREEN



random 36



GLAM GREEN BASE

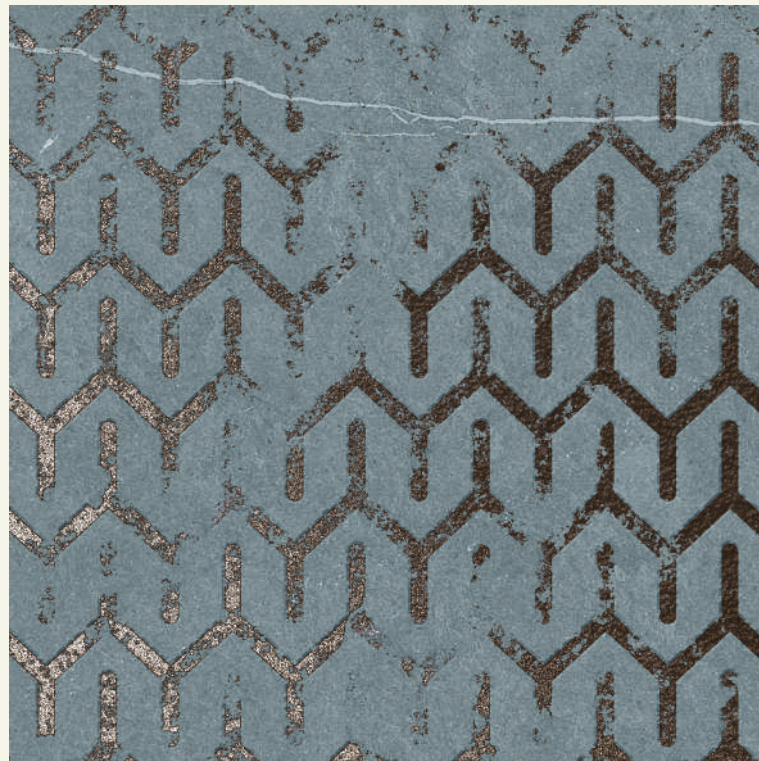
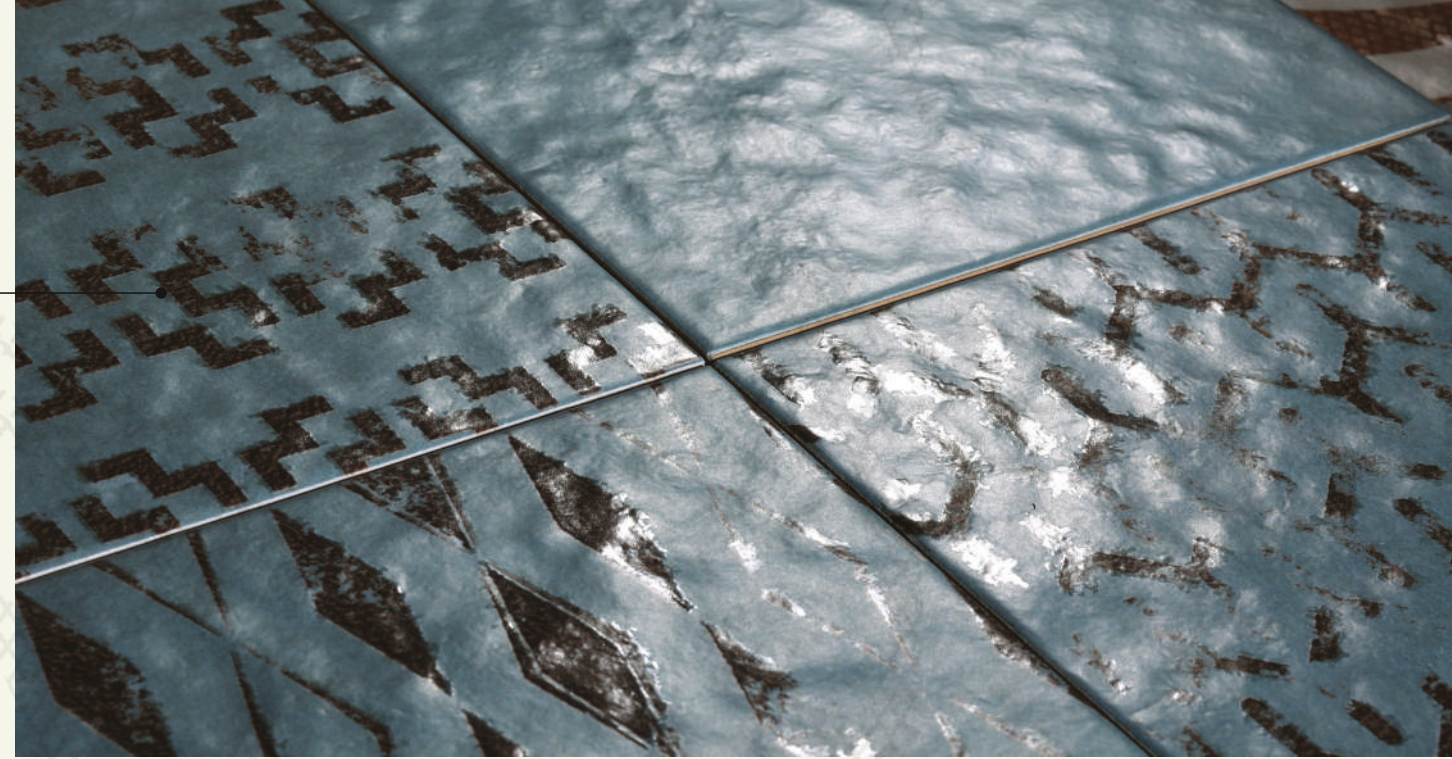


random 36

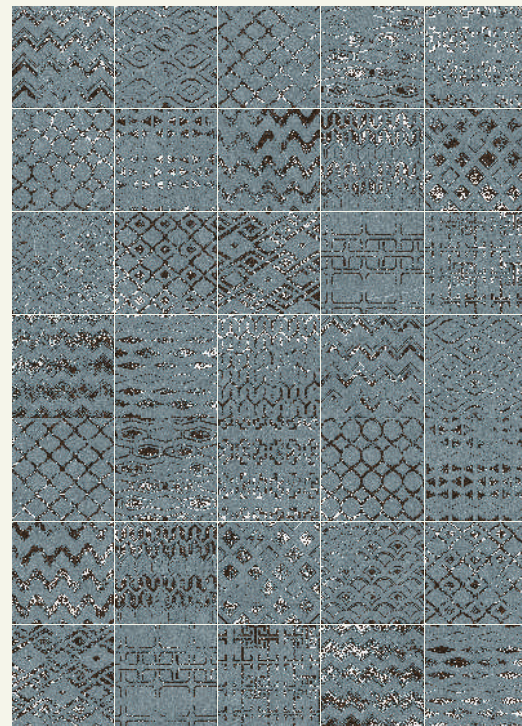


- Chemical Resistant
- Head & Fire Resistant
- Abrasion Resistant
- High Tensile Strength
- Less Water Absorption
- Environment Friendly

**200x
200mm**
matt with luster
(punch)



GLAM SKY



random 36



GLAM SKY BASE



random 36





**200x
200mm**

matt with luster



Chemical
Resistant



Heat & Fire
Resistant



Abrasion
Resistant



High Tensile
Strength



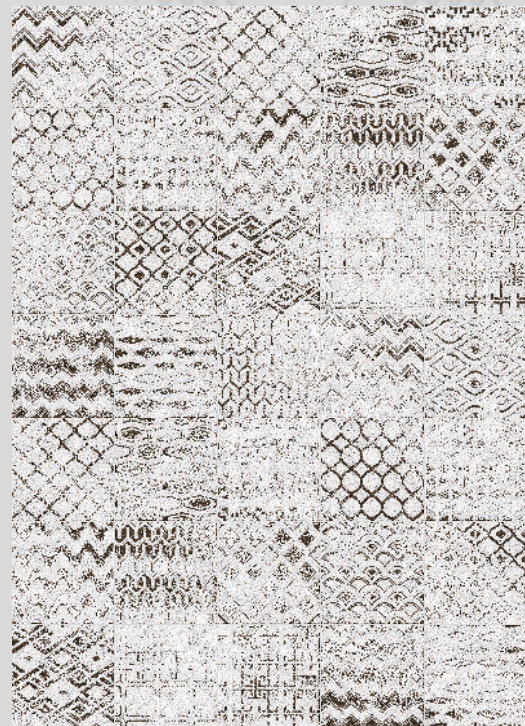
Less Water
Absorption



Environment
Friendly



GLAM WHITE



random 36



GLAM WHITE BASE



random 36





200x
200mm

matt with luster



Chemical Resistant



Head & Fire Resistant



Abrasion Resistant



High Tensile Strength



Less Water Absorption



Environment Friendly



LILAC FIORE



random 08



LILAC AMAZONIA



random 12



LILAC BASE



random 08





**200x
200mm**
matt with luster



Chemical
Resistant



Heat & Fire
Resistant



Abrasion
Resistant



High Tensile
Strength



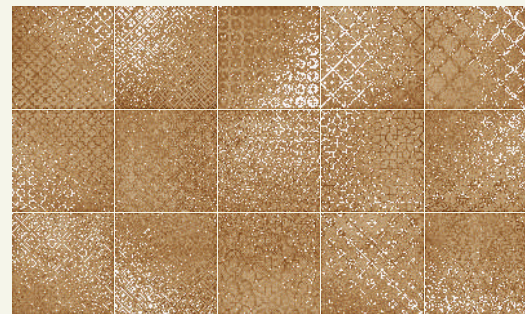
Less Water
Absorption



Environment
Friendly



MALTA JAISALMER



random 15



MALTA JAISALMER BASE

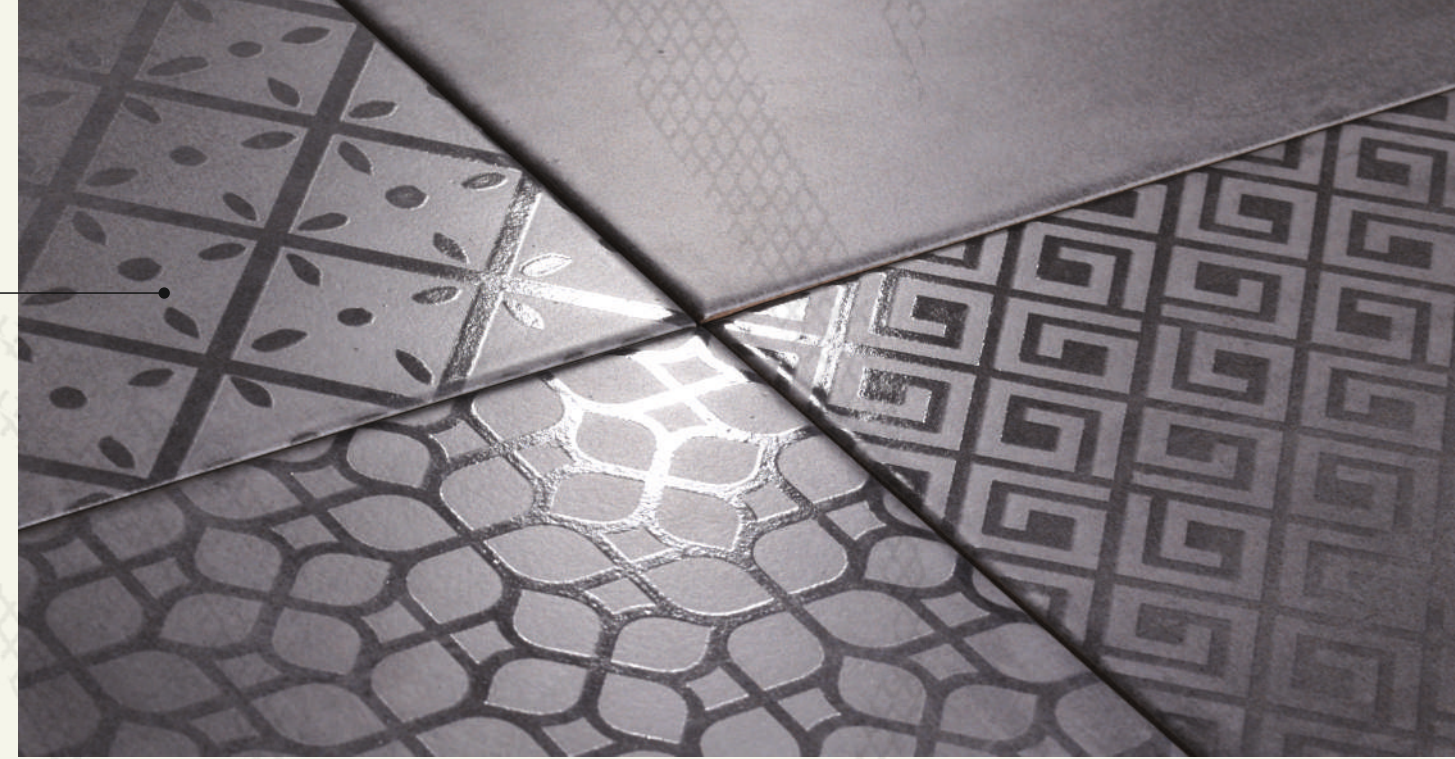


random 15

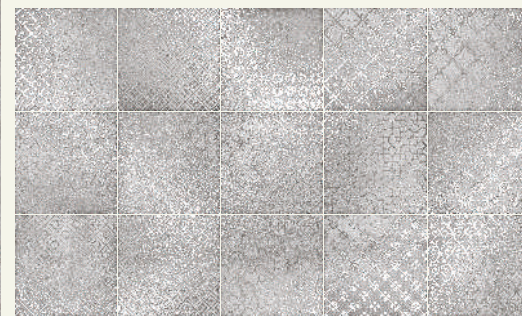


- Chemical Resistant
- Head & Fire Resistant
- Abrasion Resistant
- High Tensile Strength
- Less Water Absorption
- Environment Friendly

**200x
200mm**
matt with luster



MALTA BIANCO



random 15



MALTA BIANCO BASE



random 15





**200x
200mm**
matt with luster



Chemical
Resistant



Heat & Fire
Resistant



Abrasion
Resistant



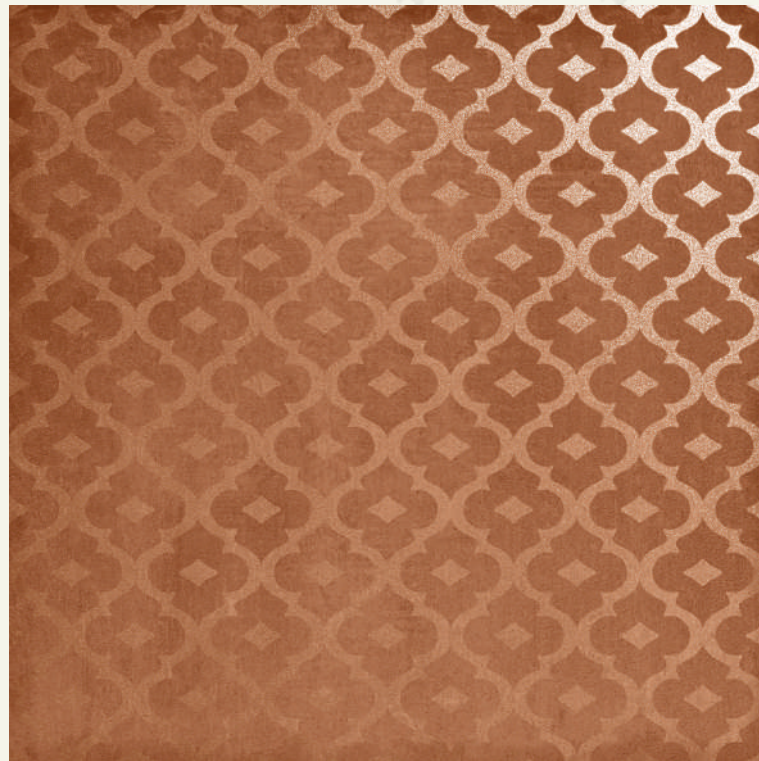
High Tensile
Strength



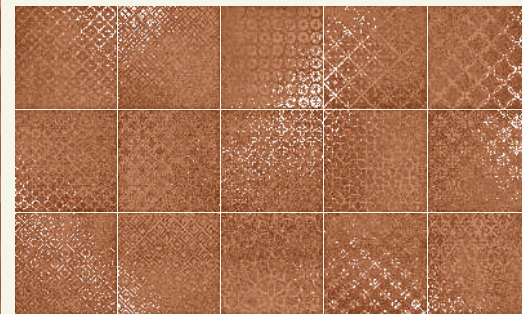
Less Water
Absorption



Environment
Friendly



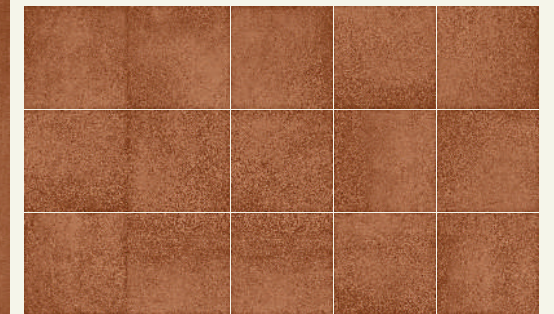
MALTA TERRA



random 15



MALTA TERRA BASE

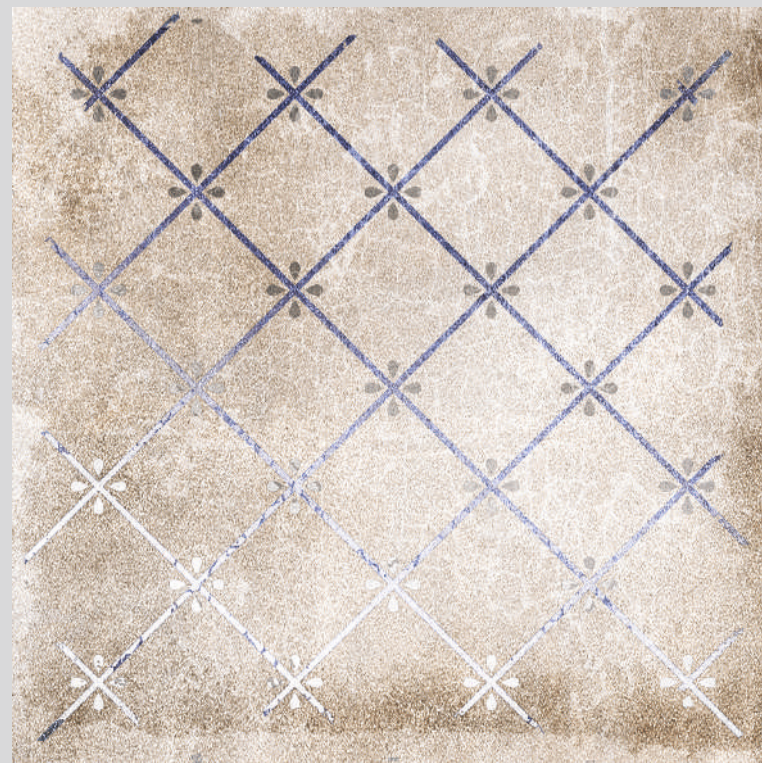


random 15



- Chemical Resistant
- Head & Fire Resistant
- Abrasion Resistant
- High Tensile Strength
- Less Water Absorption
- Environment Friendly

**200x
200mm**
matt with luster



PARIS BIANCO



random 09



PARIS BIANCO BASE



random 22





**200x
200mm**
matt with luster



Chemical
Resistant



Heat & Fire
Resistant



Abrasion
Resistant



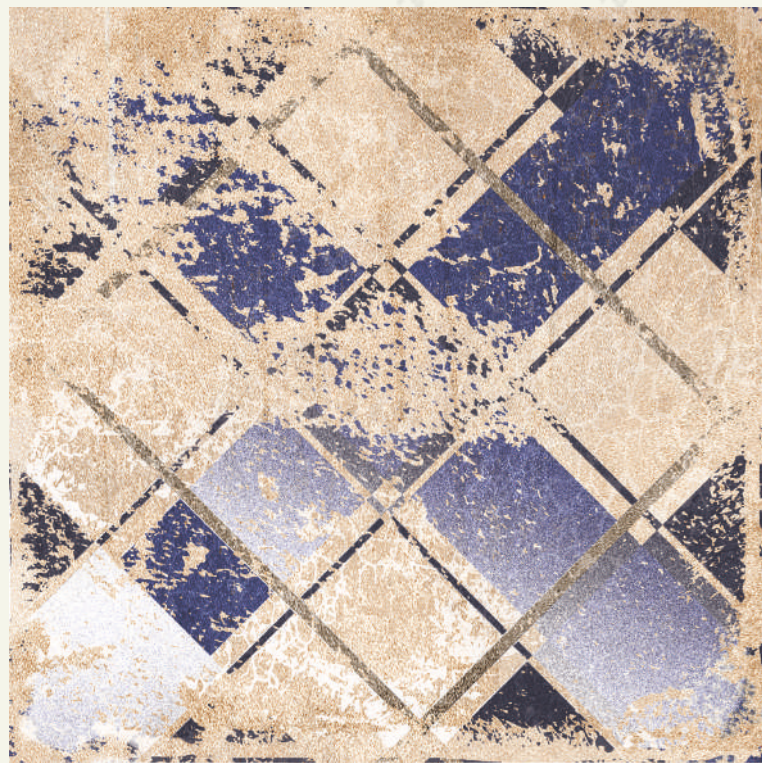
High Tensile
Strength



Less Water
Absorption



Environment
Friendly



PARIS CREMA



random 09

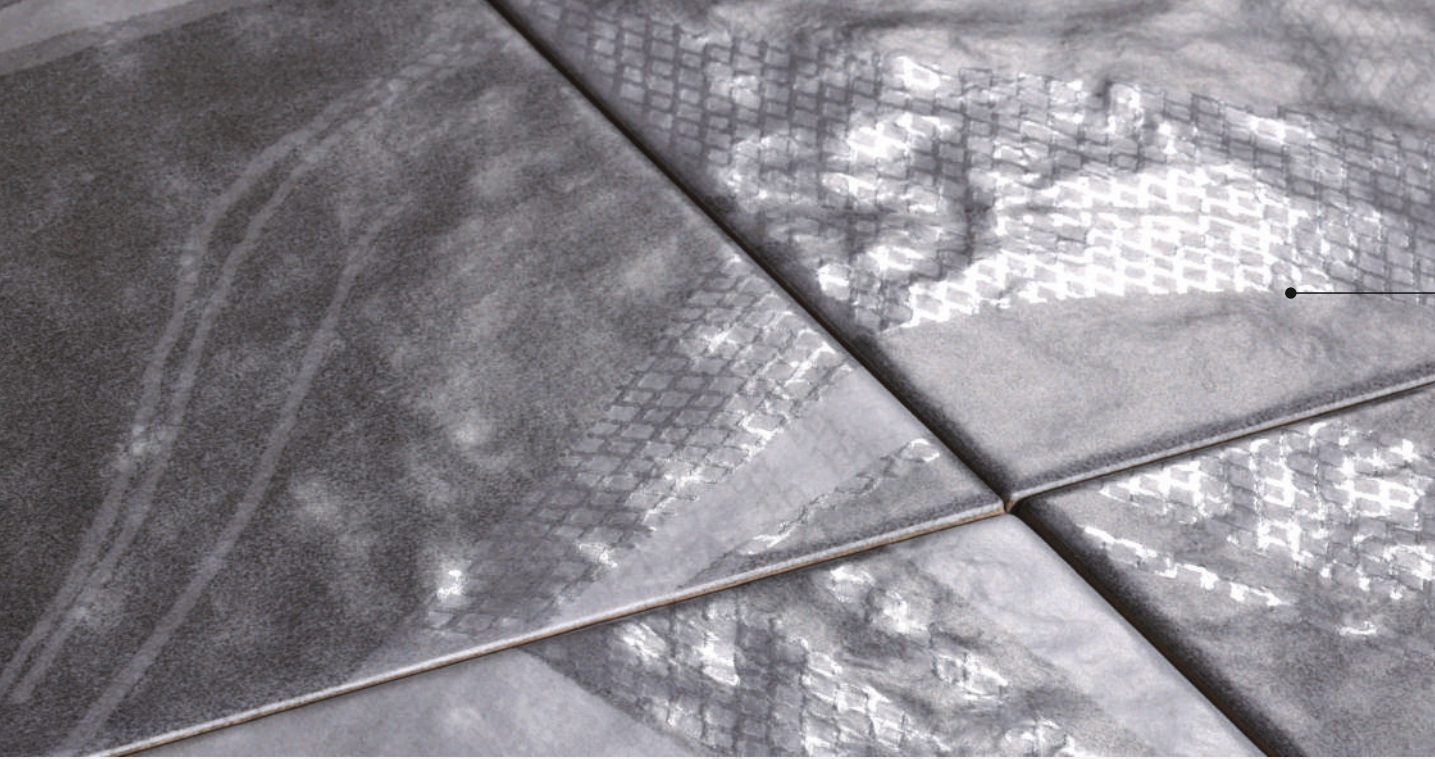


PARIS CREMA BASE



random 22





**200x
200mm**

matt with luster
(punch)



Chemical
Resistant



Heat & Fire
Resistant



Abrasion
Resistant



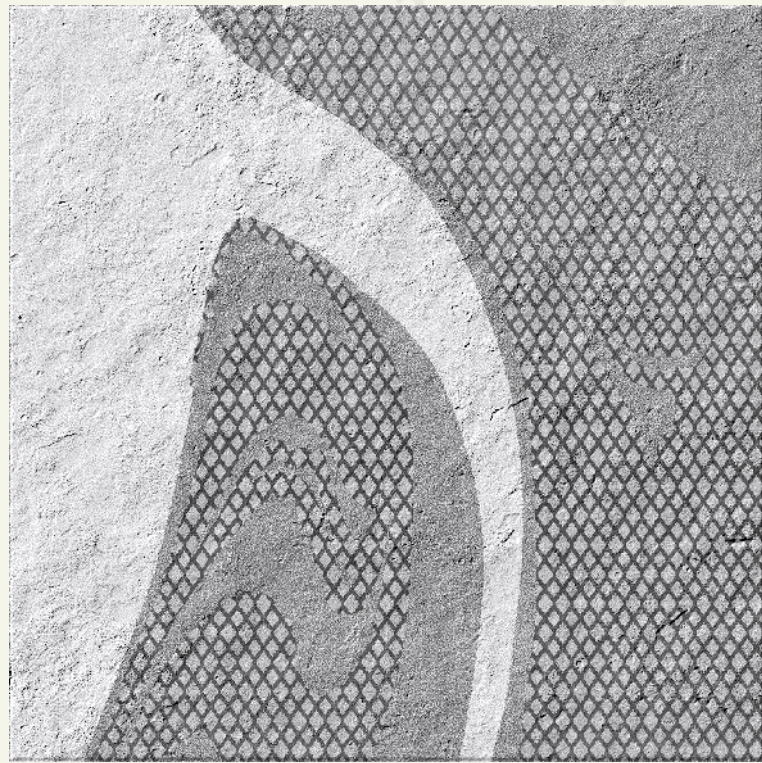
High Tensile
Strength



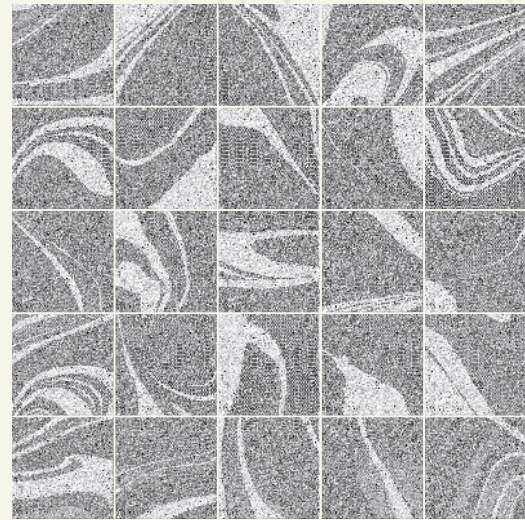
Less Water
Absorption



Environment
Friendly



CANVAS GRAY



random 25



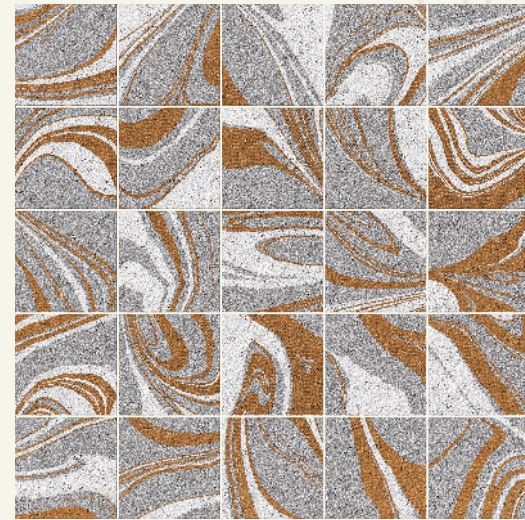
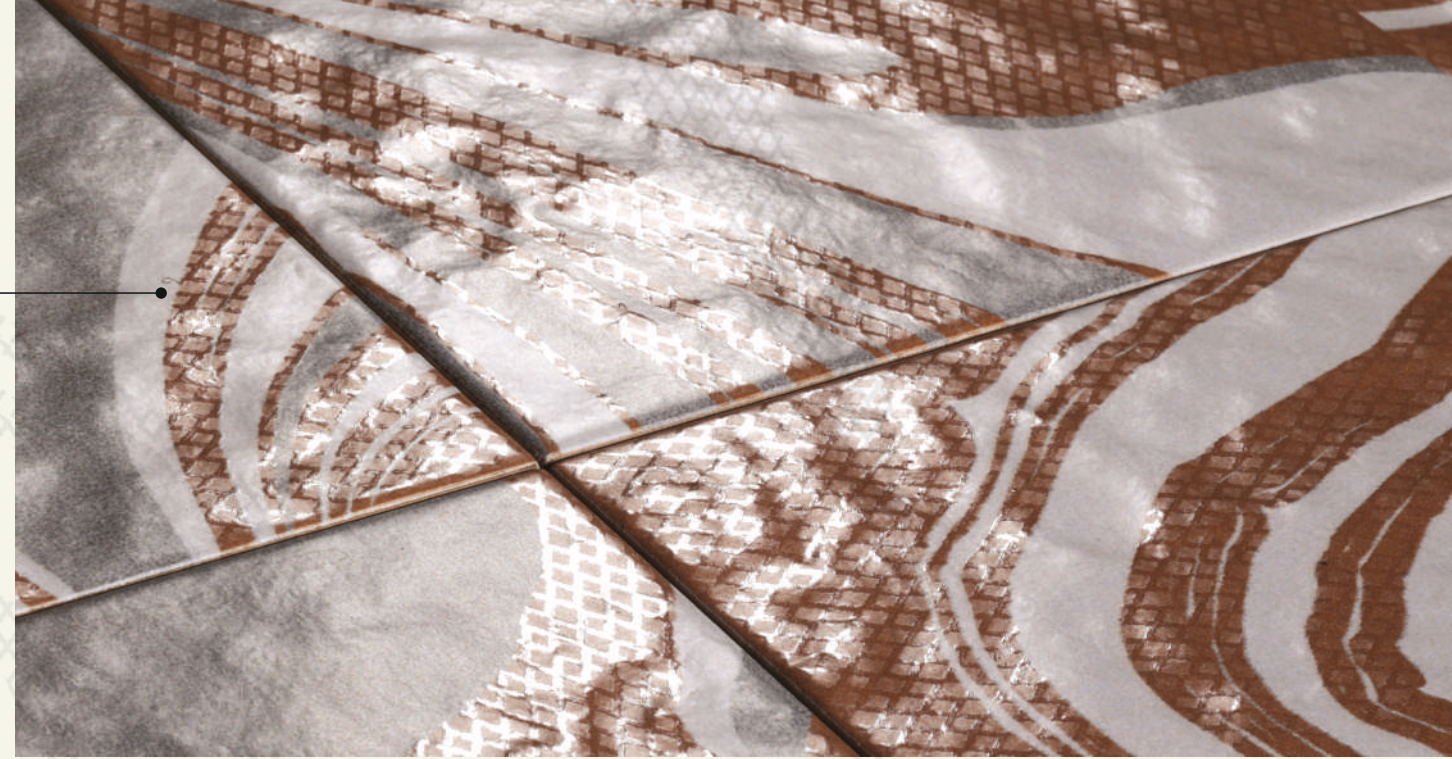
miami
COLLECTION

colortile.in

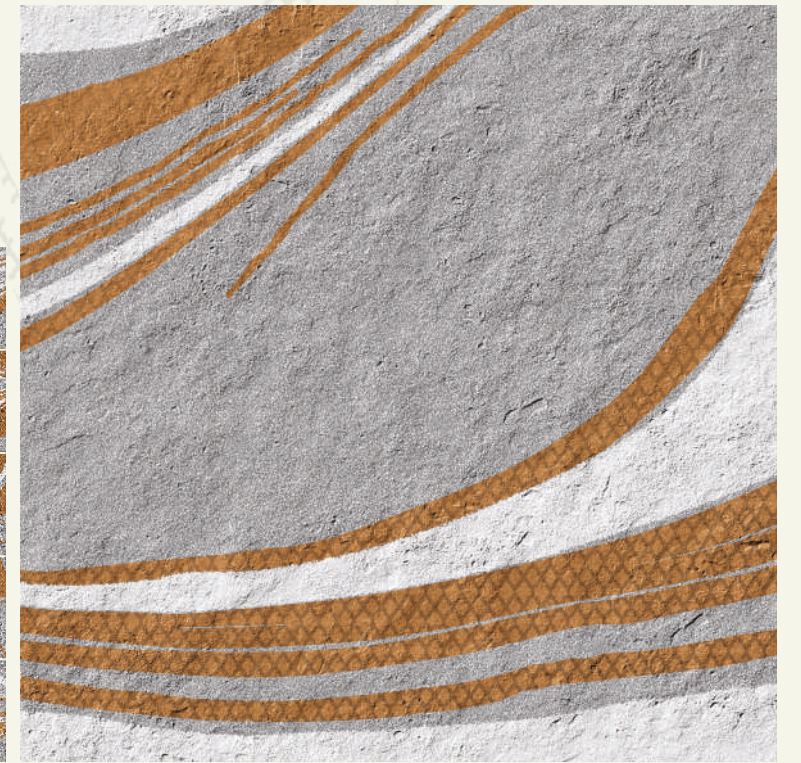


- Chemical Resistant
- Head & Fire Resistant
- Abrasion Resistant
- High Tensile Strength
- Less Water Absorption
- Environment Friendly

**200x
200mm**
matt with luster
(punch)

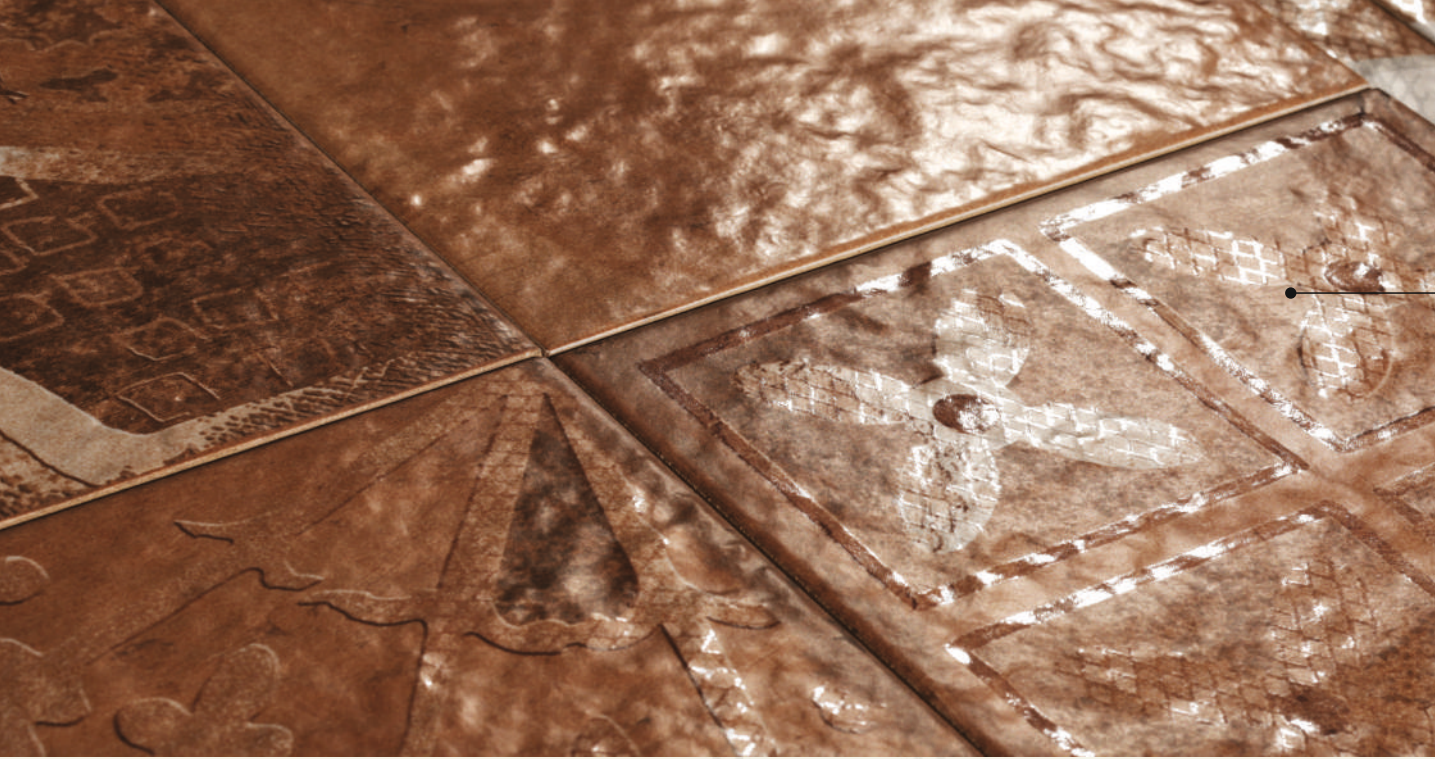


random 25



CANVAS ORANGE





**200x
200mm**

matt with luster
(punch)



Chemical
Resistant



Head & Fire
Resistant



Abrasion
Resistant



High Tensile
Strength



Less Water
Absorption



Environment
Friendly



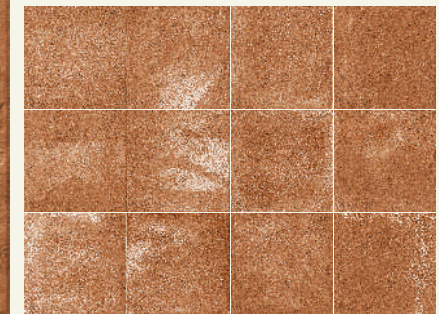
FORLI BRONZE



random 18



FORLI BRONZE BASE



random 12

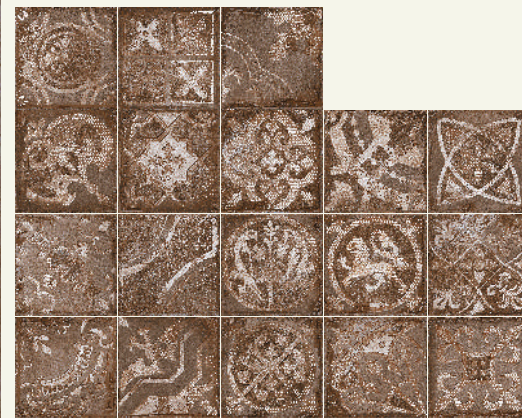


- Chemical Resistant
- Head & Fire Resistant
- Abrasion Resistant
- High Tensile Strength
- Less Water Absorption
- Environment Friendly

**200x
200mm**
matt with luster
(punch)



FORLI DESERT



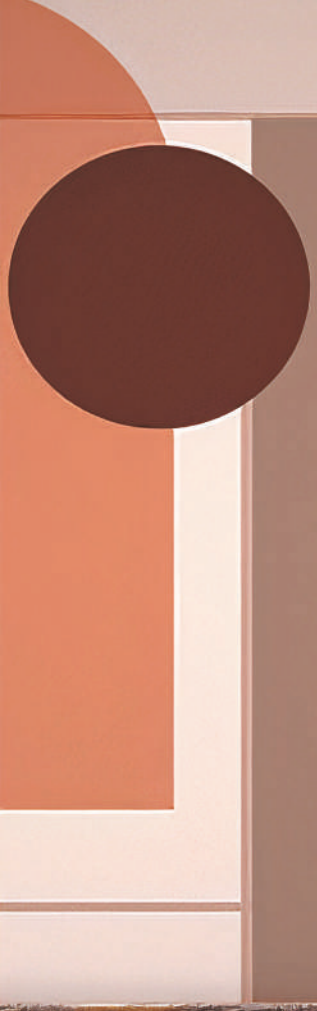
random 18



FORLI DESERT BASE



random 12



- Chemical Resistant
- Head & Fire Resistant
- Abrasion Resistant
- High Tensile Strength
- Less Water Absorption
- Environment Friendly

**200x
200mm**
matt with luster
(punch)



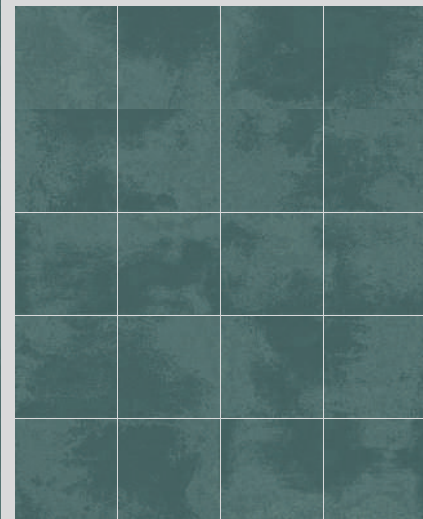
LILAC BOTANICAL



random 16



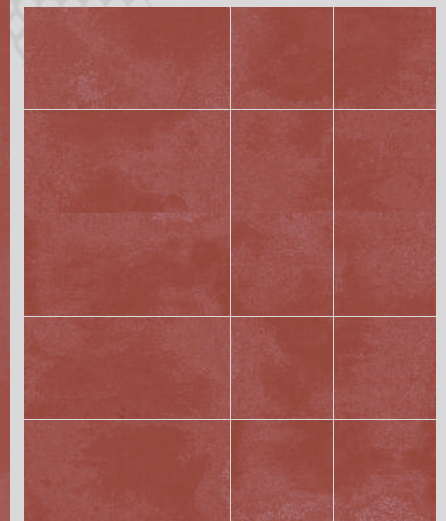
LILAC FRESCO



random 20



LILAC ROSA



random 20



- Chemical Resistant
- Head & Fire Resistant
- Abrasion Resistant
- High Tensile Strength
- Less Water Absorption
- Environment Friendly

**200x
200mm**
matt with luster
(punch)



LILAC SELVA



random 16



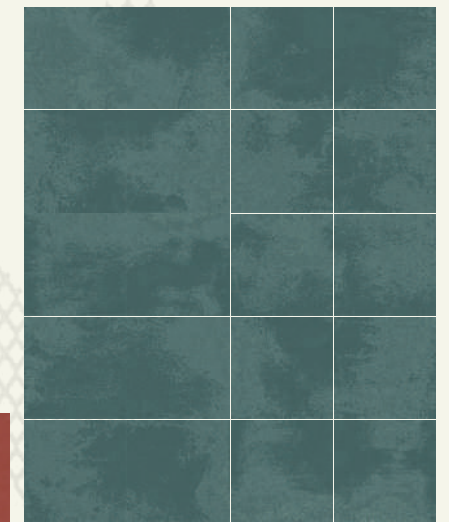
LILAC GRIS



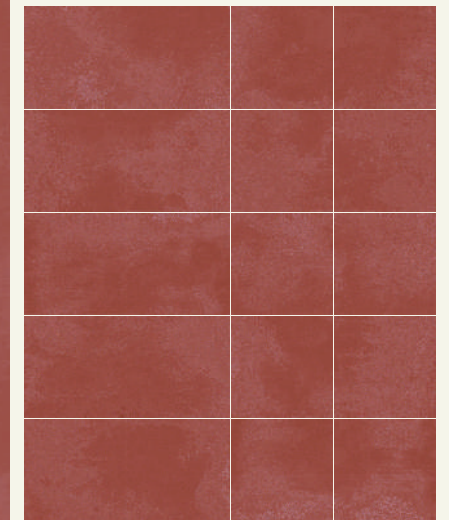
random 16



LILAC ROSA



LILAC FRESCO random 20

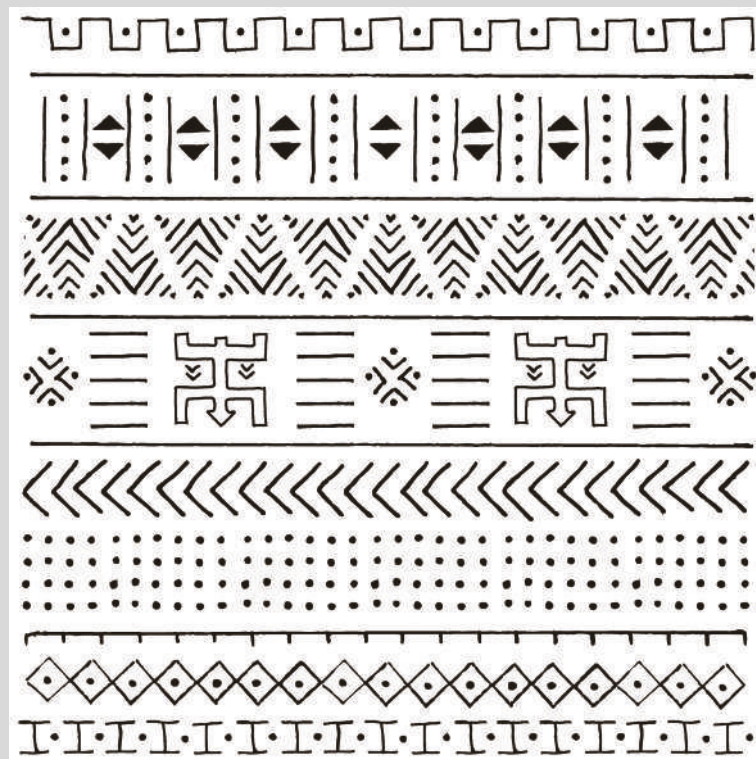
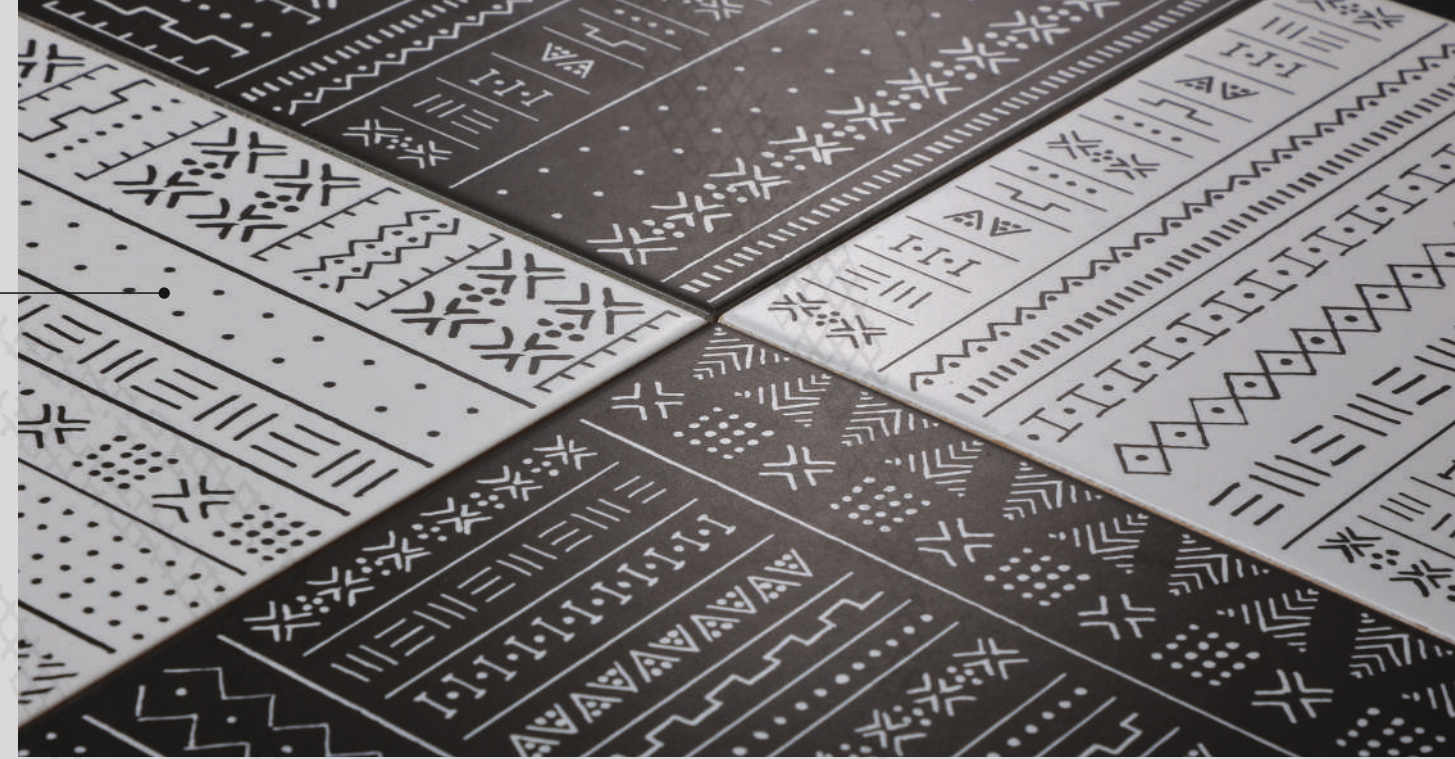


random 20

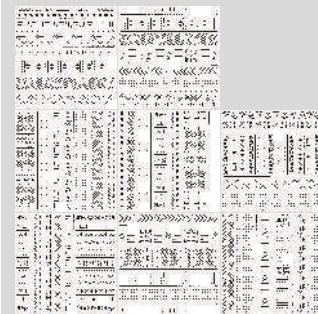


- Chemical Resistant
- Head & Fire Resistant
- Abrasion Resistant
- High Tensile Strength
- Less Water Absorption
- Environment Friendly

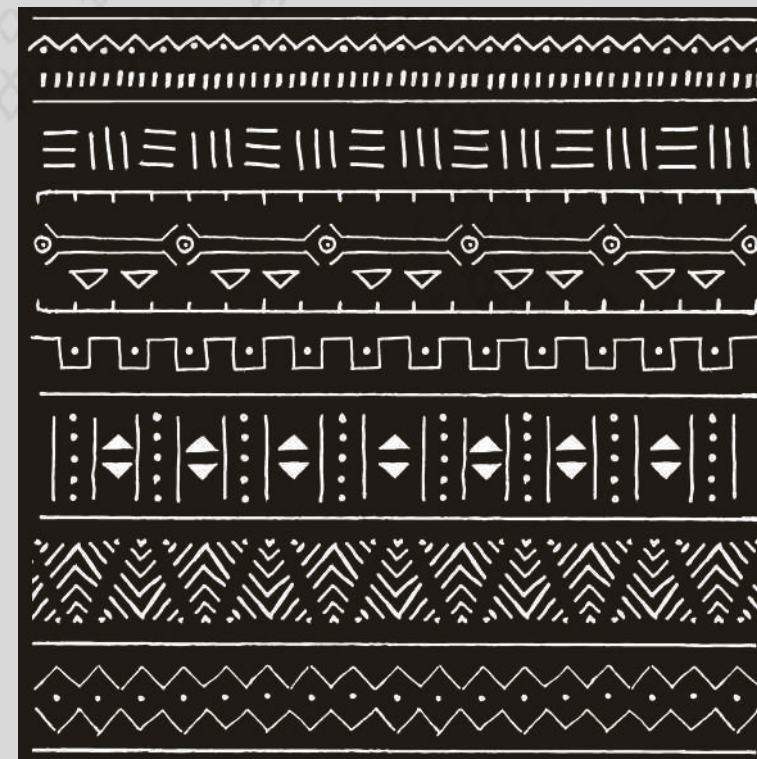
**200x
200mm**
matt with luster
(punch)



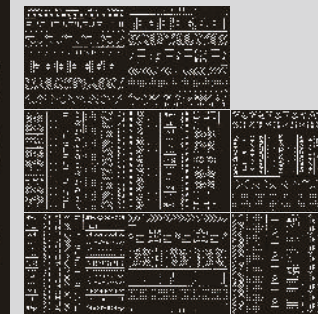
ETHNIC WHITE



random 08



ETHNIC BLACK



random 08



miami

COLLECTION

Size	200x200mm
Thickness	10mm
Pcs/Box	20 pcs.
Kg/Box	13.300 kg.
Coverage Area	8.61 sq. ft./0.800 sq.mtr.

colortile
ceramics & innovation